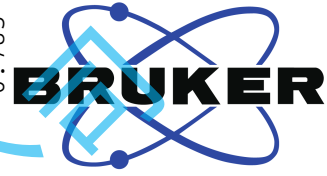


7.274  
7.269  
7.257  
7.252  
7.250  
7.245  
7.232  
7.227  
7.085  
7.080  
7.073  
7.068  
7.063  
7.056  
7.052  
4.990  
4.896  
4.886  
4.877  
3.894  
3.891  
3.869  
3.864  
3.861  
3.856  
3.716  
3.712  
3.703  
3.699  
3.669  
3.667  
3.457  
3.449  
3.432  
3.427  
3.419  
3.414  
3.408  
3.397  
3.390  
3.386  
2.948  
2.909  
2.652  
2.613  
1.642  
1.626  
1.588  
1.574  
0.916  
0.899  
0.801  
0.785



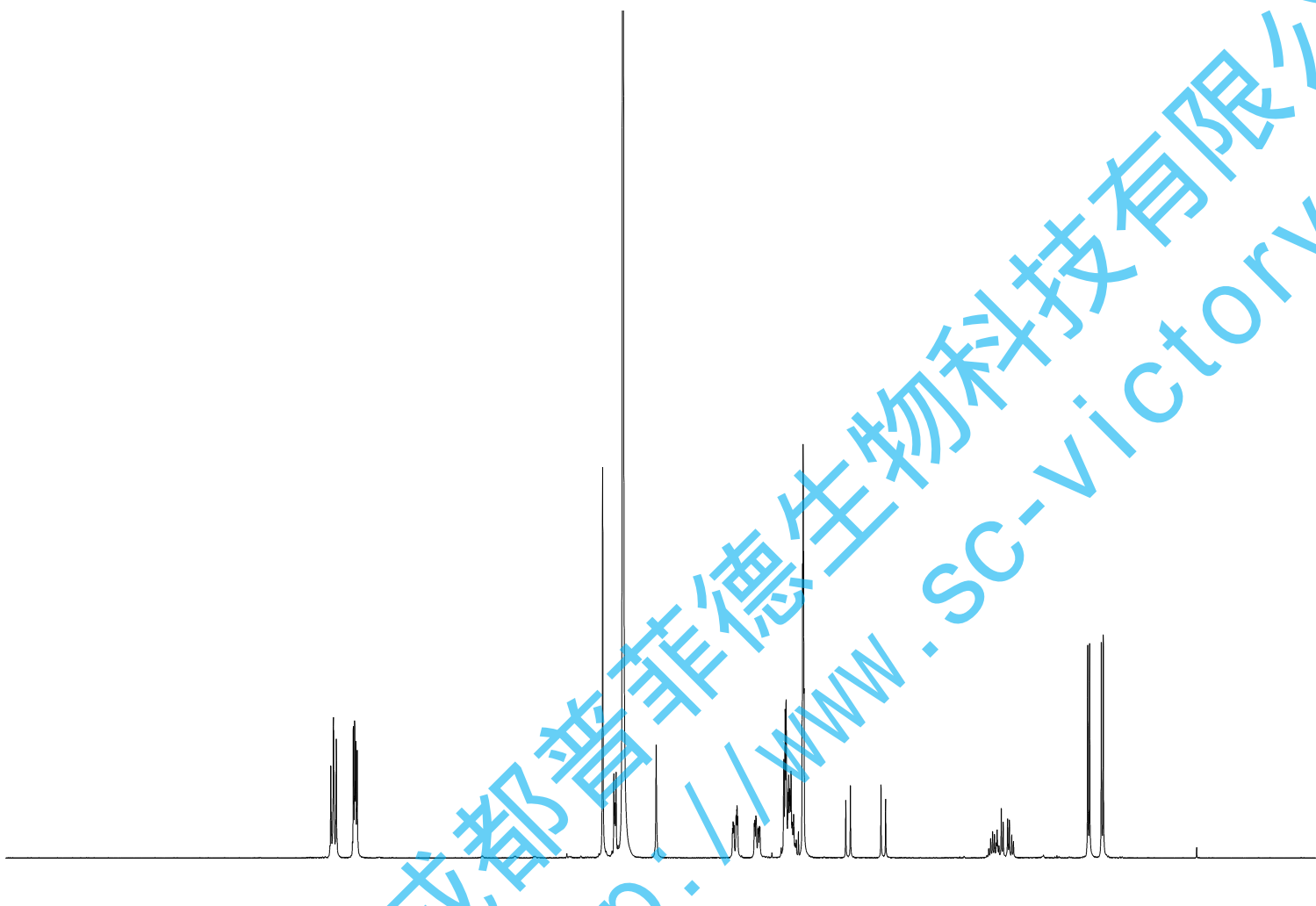
Current Data Parameters  
 NAME CB-5-1H NMR CD3OD  
 EXPNO 1  
 PROCNO 1

F2 - Acquisition Parameters

INSTRUM spect  
 PROBHD 5 mm PABBO BB/  
 PULPROG zg30  
 TD 65536  
 SOLVENT MeOD  
 NS 64  
 DS 2  
 SWH 8012.820 Hz  
 FIDRES 0.122266 Hz  
 AQ 4.0894465 sec  
 RG 116.95  
 DW 62.400 usec  
 DE 6.50 usec  
 TE 301.2 K  
 D1 2.0000000 sec  
 TD0 1

==== CHANNEL f1 =====  
 SFO1 400.1324710 MHz  
 NUC1 1H  
 P1 14.79 usec  
 PLW1 11.50800037 W

F2 - Processing parameters  
 SI 262144  
 SF 400.1300093 MHz  
 WDW EM  
 SSB 0  
 LB 0.30 Hz  
 GB 0  
 PC 1.00



成都普菲德生物科技有限公司  
 http://www.sc-victory.com