

13.245
11.691
11.561
7.529
7.528
7.510
7.492
7.474
7.459
7.458
7.344
7.323
7.294
7.291
7.267
7.264
7.247
7.226
6.806
5.120
5.109
5.053
5.040
5.014
5.005
4.976
4.973
4.959
4.950
4.865
4.825
4.814
4.789
4.784
4.702
4.683
4.545
4.531
4.517
4.517
3.804
3.801
3.774
3.707
3.695
3.680
3.678
3.669
3.562
3.548
3.534
3.480
3.466
3.451
3.437
3.422
3.377
3.368
3.354
3.344
3.234
3.225
3.203
3.191
3.150
3.124

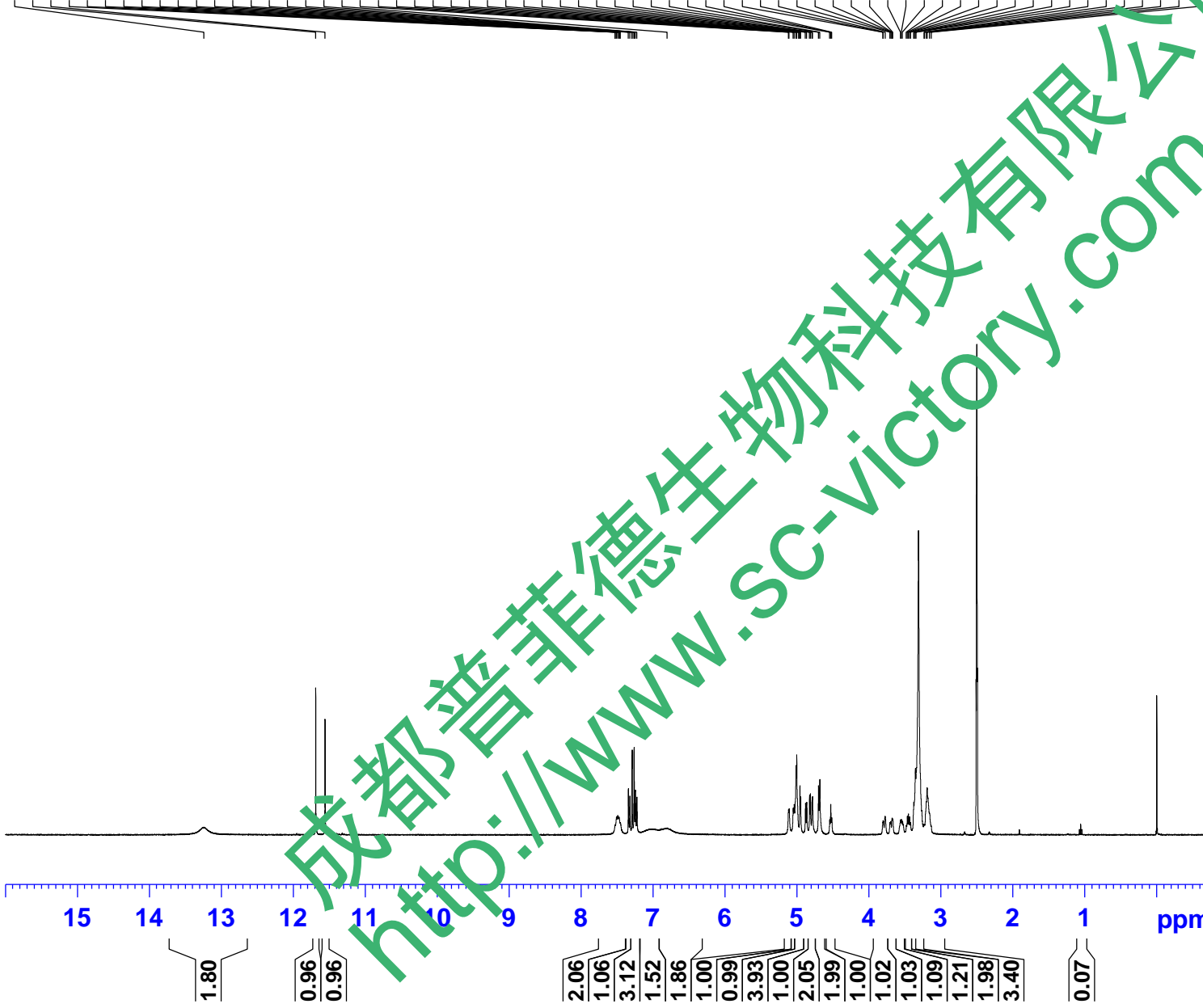


Current Data Parameters
 NAME Sennoside B-1H NMR DMSO
 EXPNO 1
 PROCNO 1

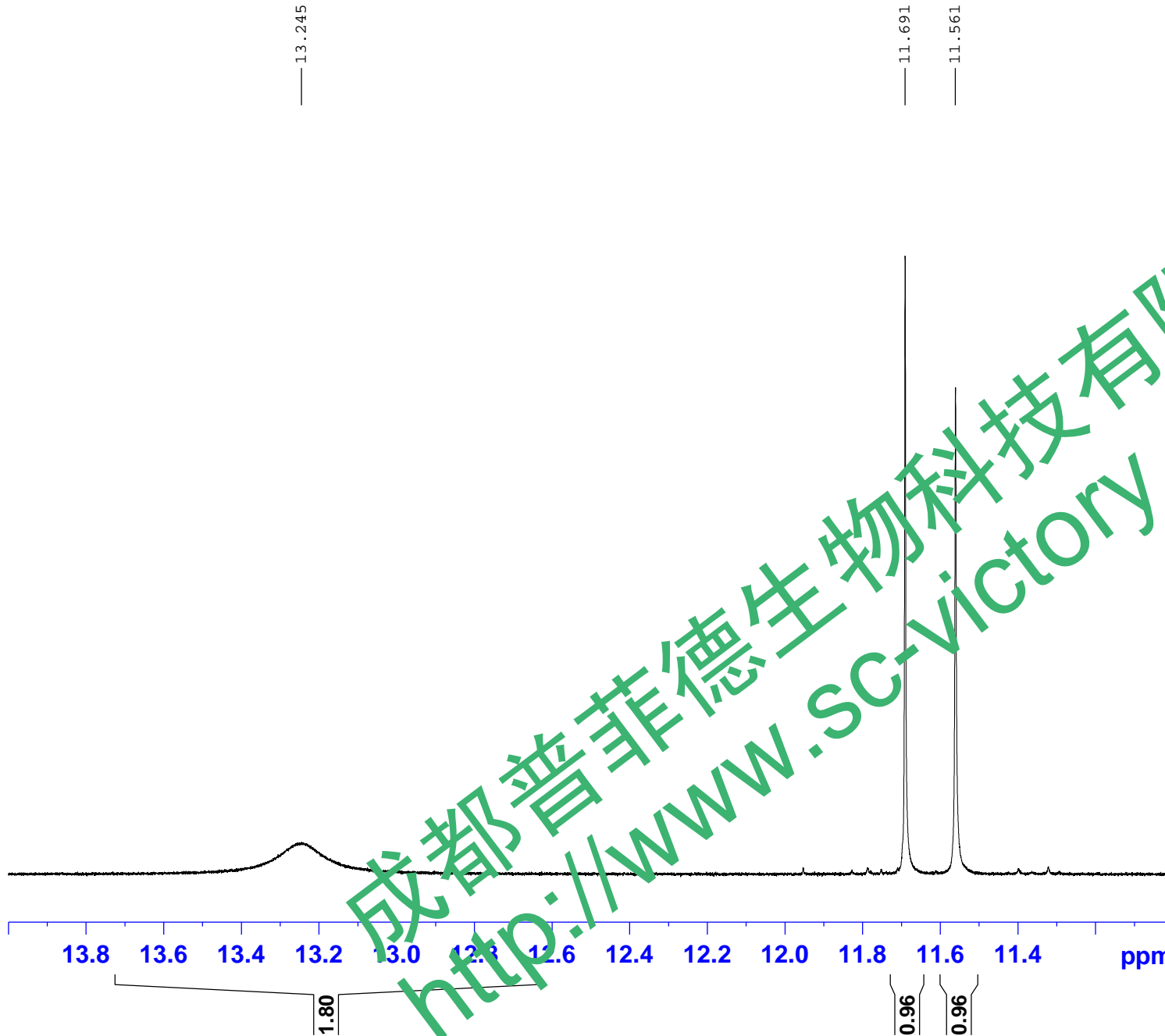
F2 - Acquisition Parameters
 SWH 8012.820 Hz
 Date_
 Time 13.42
 INSTRUM spect
 PROBHD 5 mm PABBO BB/
 PULPROG zg30
 TD 65536
 SOLVENT DMSO
 NS 64
 DS 2
 FIDRES 0.122266 Hz
 AQ 4.0894465 sec
 RG 202.5
 DW 62.400 usec
 DE 6.50 usec
 TE 301.2 K
 D1 2.00000000 sec
 TD0 1

==== CHANNEL f1 =====
 SFO1 400.1324710 MHz
 NUC1 1H
 P1 14.79 usec
 PLW1 11.50800037 W

F2 - Processing parameters
 SI 262144
 SF 400.1300025 MHz
 WDW no
 SSB 0
 LB 0 Hz
 GB 0
 PC 1.00



成都普菲德生物科技有限公司
<http://www.sc-victory.com>



Current Data Parameters
NAME Senriocide B-1H NMR DMSO
EXPNO 1
PROCNO 1

F2 - Acquisition Parameters
SFO1 8012.820 Hz
P1 20160413
Time 13.42
INSTRUM spect
PROBHD 5 mm PABBO BB/
PULPROG zg30
TD 65536
SOLVENT DMSO
NS 64
DS 2
FIDRES 0.122266 Hz
AQ 4.0894465 sec
RG 202.5
DW 62.400 usec
DE 6.50 usec
TE 301.2 K
D1 2.00000000 sec
TD0 1

==== CHANNEL f1 =====
SFO1 400.1324710 MHz
NUC1 1H
P1 14.79 usec
PLW1 11.50800037 W

F2 - Processing parameters
SI 262144
SF 400.1300025 MHz
WDW no
SSB 0
LB 0 Hz
GB 0
PC 1.00

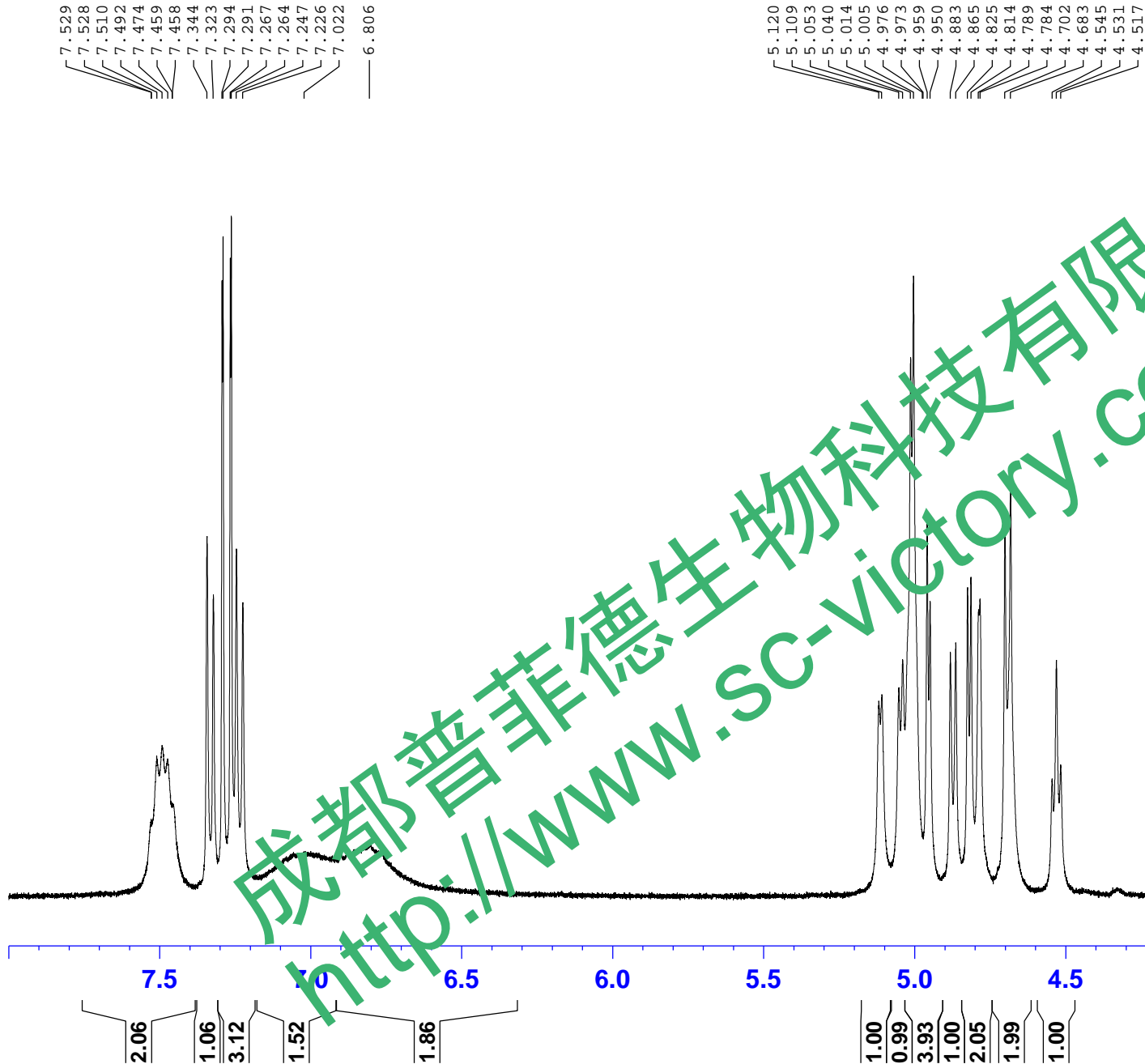


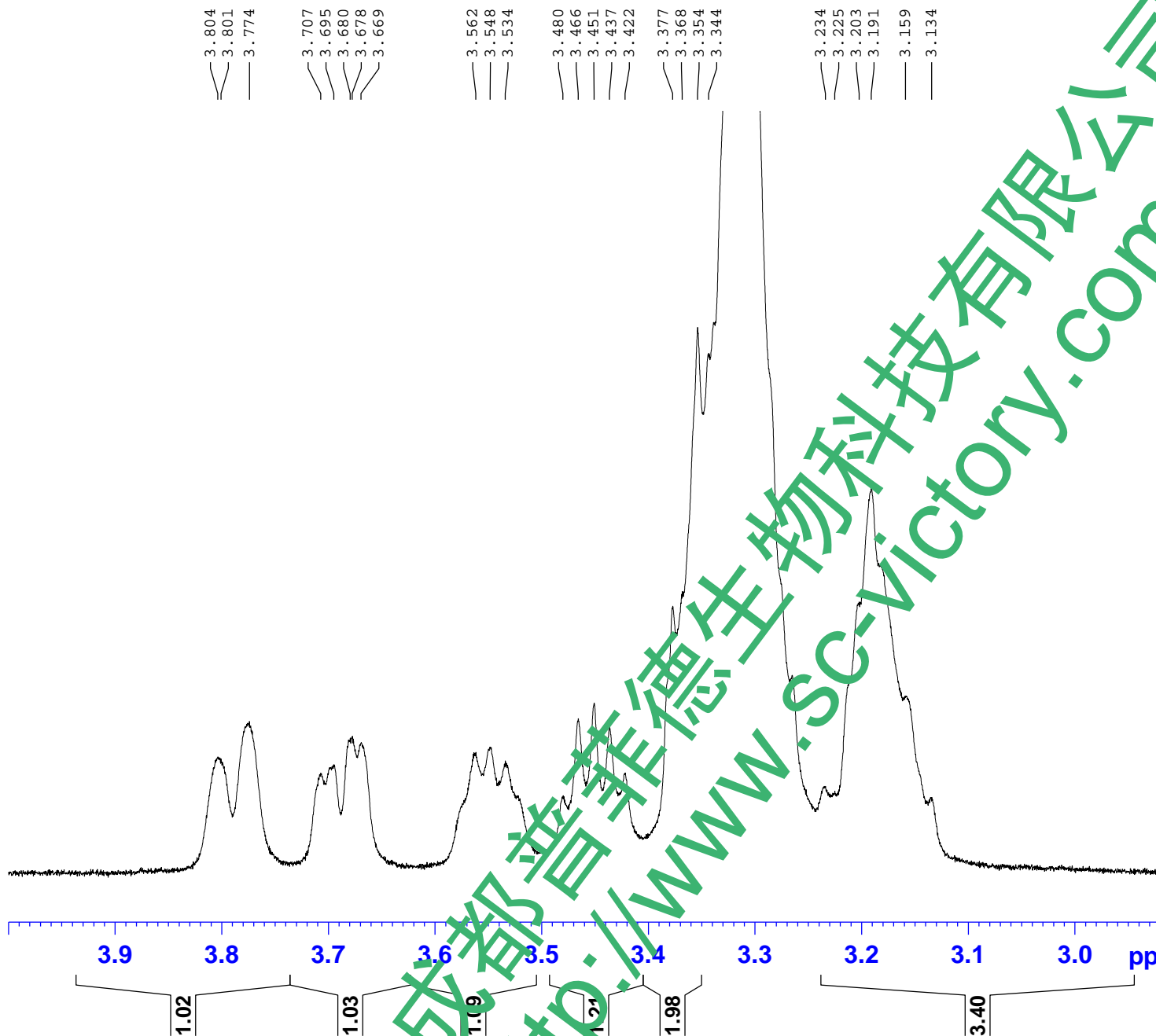
Current Data Parameters
NAME Sennoside B-1H NMR DMSO
EXPNO 1
PROCNO 1

F2 - Acquisition Parameters
SWH 8012.820 Hz
Faq_ 20160413
Time 13.42
INSTRUM spect
PROBHD 5 mm PABBO BB/
PULPROG zg30
TD 65536
SOLVENT DMSO
NS 64
DS 2
FIDRES 0.122266 Hz
AQ 4.0894465 sec
RG 202.5
DW 62.400 usec
DE 6.50 usec
TE 301.2 K
D1 2.00000000 sec
TD0 1

==== CHANNEL f1 =====
SFO1 400.1324710 MHz
NUC1 1H
P1 14.79 usec
PLW1 11.50800037 W

F2 - Processing parameters
SI 262144
SF 400.1300025 MHz
WDW no
SSB 0
LB 0 Hz
GB 0
PC 1.00





3.804
3.801
3.774
3.707
3.695
3.680
3.678
3.669
3.562
3.548
3.534
3.480
3.466
3.451
3.437
3.422
3.377
3.368
3.354
3.344
3.234
3.225
3.203
3.191
3.159
3.134

Current Data Parameters
NAME Sennoside B-1H NMR DMSO
EXPNO 1
PROCNO 1

F2 - Acquisition Parameters
SWH 8012.820 Hz
Date_ 20160413
Time 13.42
INSTRUM spect
PROBHD 5 mm PABBO BB/
PULPROG zg30
TD 65536
SOLVENT DMSO
NS 64
DS 2
FIDRES 0.122266 Hz
AQ 4.0894465 sec
RG 202.5
DW 62.400 usec
DE 6.50 usec
TE 301.2 K
D1 2.00000000 sec
TD0 1

==== CHANNEL f1 =====
SFO1 400.1324710 MHz
NUC1 1H
P1 14.79 usec
PLW1 11.50800037 W

F2 - Processing parameters
SI 262144
SF 400.1300025 MHz
WDW no
SSB 0
LB 0 Hz
GB 0
PC 1.00