

GBNZ

BRUKER

Current Data Parameters

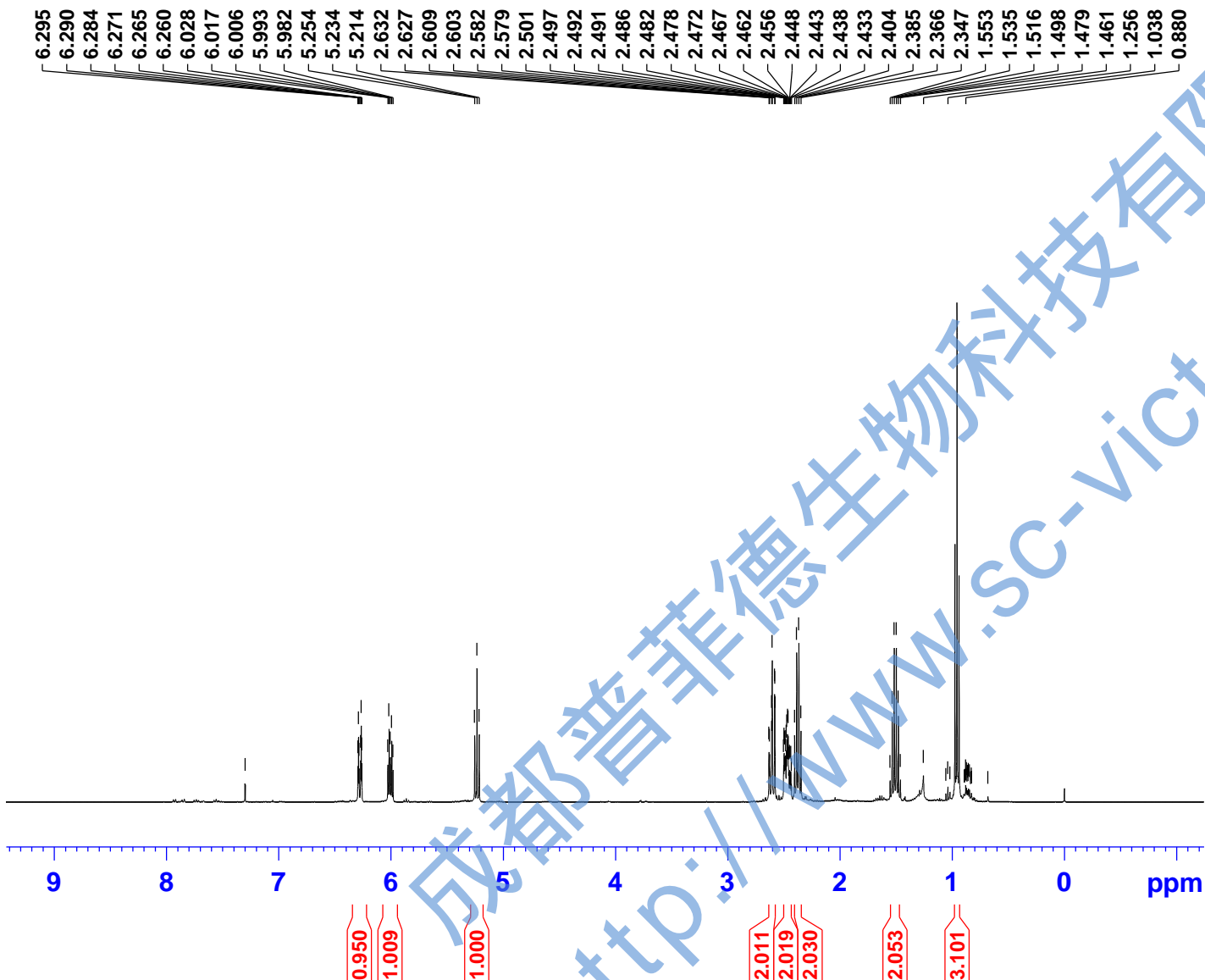
NAME	GBNZ
EXPNO	10
PROCNO	1

F2 - Acquisition Parameters

INSTRUM	spect
PROBHD	Z116098_0564 (
PULPROG	zg30
TD	65536
SOLVENT	CDC13
NS	16
DS	2
SWH	8012.820 Hz
FIDRES	0.244532 Hz
AQ	4.0894465 sec
RG	32.03
DW	62.400 usec
DE	6.50 usec
TE	300.0 K
D1	1.00000000 sec
TD0	1
SFO1	400.1324708 MHz
NUC1	1H
P1	9.84 usec
PLW1	14.56099987 W

F2 - Processing parameters

SI	65536
SF	400.1299935 MHz
WDW	EM
SSB	0
LB	0.30 Hz
GB	0
PC	1.00



GBNZ

— 167.63
 — 148.58
 — 147.13
 — 129.95
 — 123.97
 — 117.05
 — 112.93
 — 77.41
 — 77.09
 — 76.77
 — 28.13
 — 22.41
 — 18.52
 — 13.78

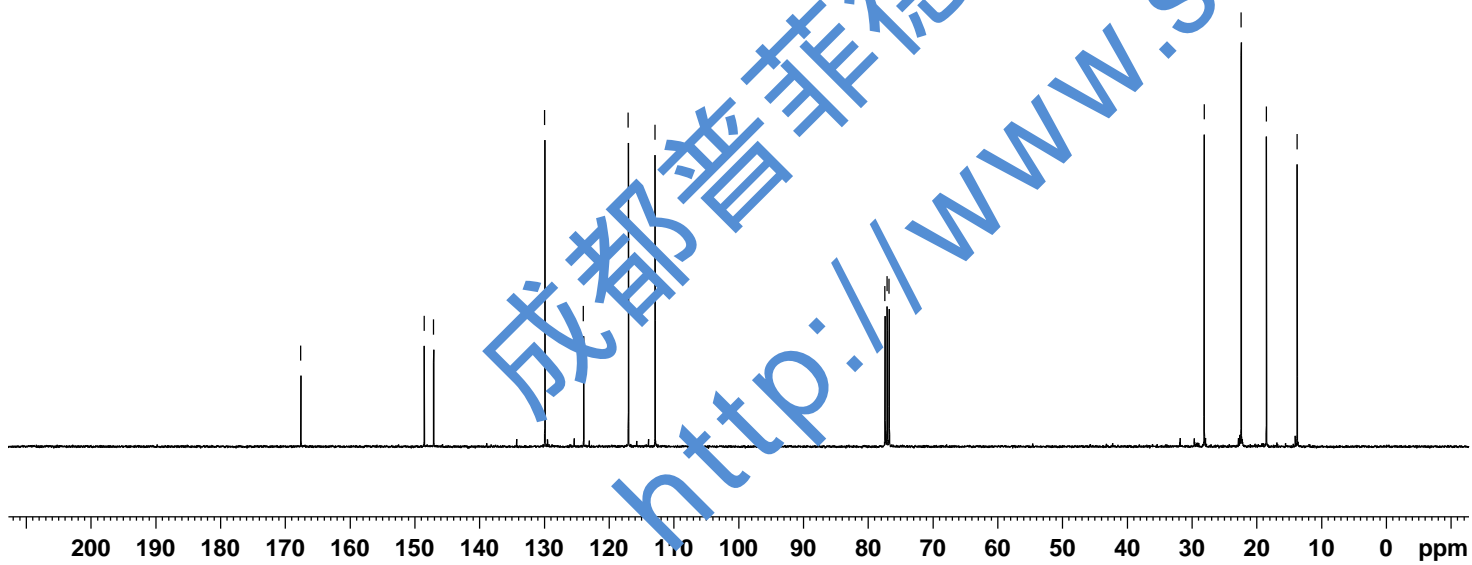
BRUKER

Name: GBNZ
 EXPNO: 11
 PROCNO: 1

F2 - Acquisition Parameters

INST: spect
 PROBHD: Z116098_0564
 PULPROG: zgpg30
 TD: 65536
 SOLVENT: CDC13
 NS: 500
 DS: 4
 SWH: 24038.461 Hz
 FIDRES: 0.733596 Hz
 AQ: 1.3631488 sec
 RG: 198.68
 DW: 20.800 usec
 DE: 6.50 usec
 TE: 300.0 K
 D1: 2.0000000 sec
 D11: 0.0300000 sec
 TD0: 1
 SFO1: 100.6228298 MHz
 NUC1: 13C
 P1: 10.53 usec
 PLW1: 69.16899872 W
 SFO2: 400.1316005 MHz
 NUC2: 1H
 CPDPRG[2]: waltz16
 PCPD2: 90.00 usec
 PLW2: 14.56099987 W
 PLW12: 0.17406000 W
 PLW13: 0.08755000 W

F2 - Processing parameters
 SI: 32768
 SF: 100.6127685 MHz
 WDW: EM
 SSB: 0
 LB: 1.00 Hz
 GB: 0
 PC: 1.40



成都普菲德生物科技有限公司
<http://www.sc-victory.com>