

—10.135

7.697
7.695
7.473

3.978
3.877
3.863
3.810

—2.268



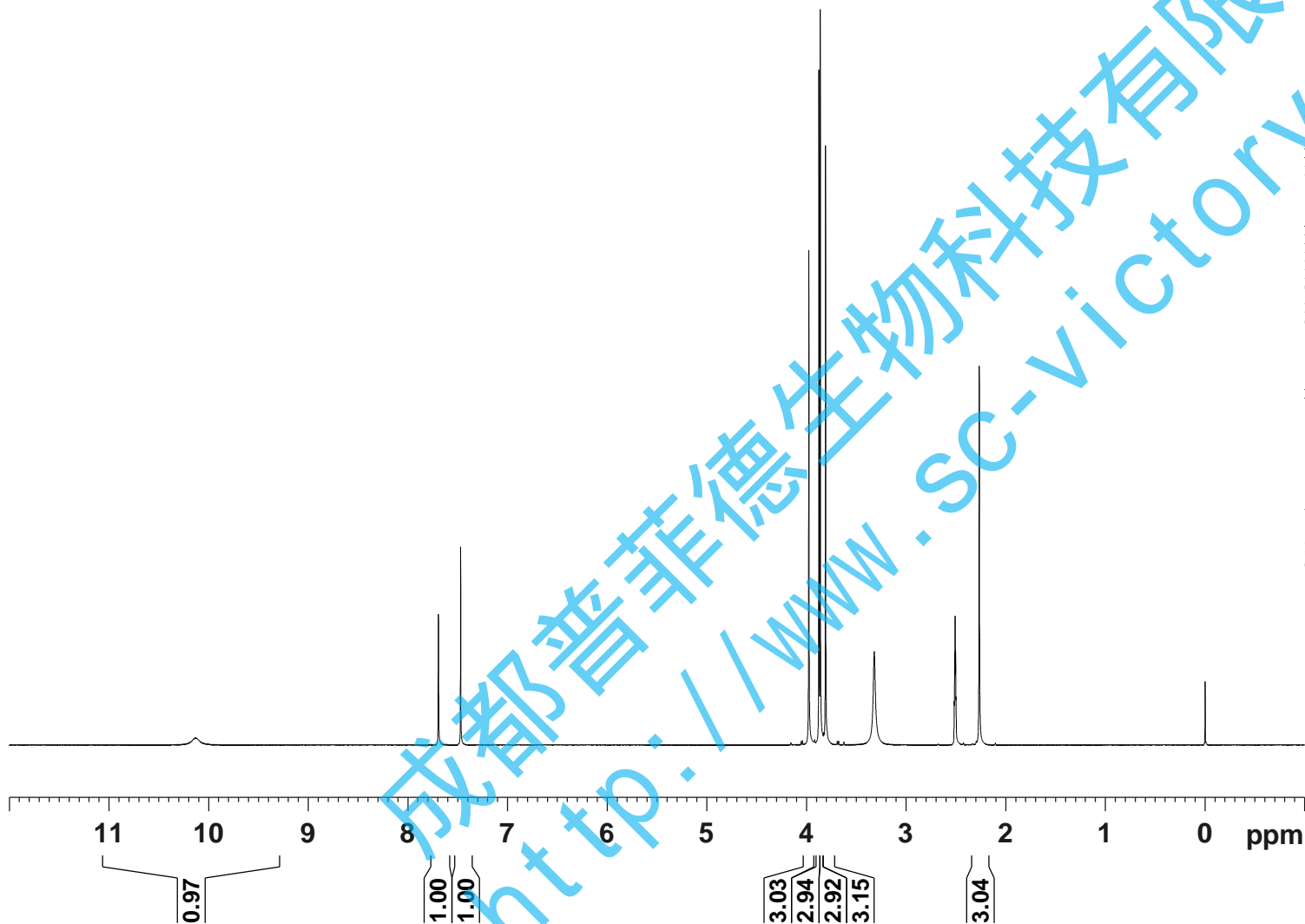
Current Data Parameters
NAME ChengHuangJueMingSu 2#-1H NMR DMSO
EXPNO 1
PROCNO 1

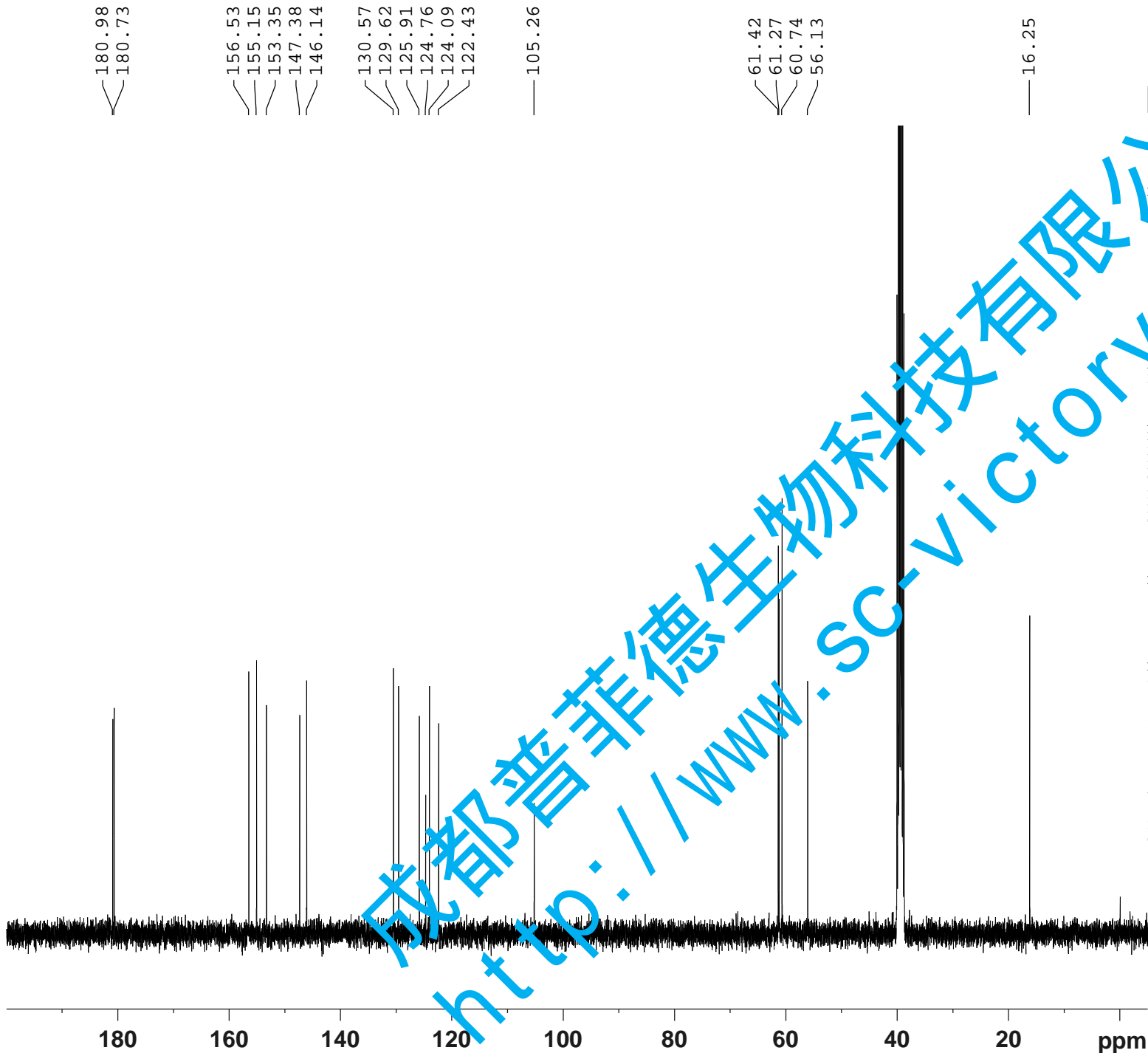
F2 - Acquisition Parameters

INSTRUM spect
PROBHD 5 mm PABBO BB/
PULPROG zg30
TD 65536
SOLVENT DMSO
NS 16
DS 2
SWH 8012.820 Hz
FIDRES 0.122266 Hz
AQ 4.0894465 sec
RG 163.31
DW 62.400 usec
DE 6.50 usec
TE 301.2 K
D1 1.0000000 sec
TDO 1

=====
CHANNEL f1
SF01 400.1324710 MHz
NUC1 1H
P1 14.79 usec
PLW1 11.50800037 W

F2 - Processing parameters
SI 65536
SF 400.1299998 MHz
WDW EM
SSB 0
LB 0.30 Hz
GB 0
PC 1.00
SR -0.16 Hz





Current Data Parameters
NAME ChengJiangJueMingSu 2#-13C NMR DMSO
EXPNO 1
PROCNO 1

F2 - Acquisition Parameters

INSTRUM spect
PROBHD 5 mm PABBO BB/
PULPROG zgig30
TD 65536
SOLVENT DMSO
NS 800
DS 4
SWH 24038.461 Hz
FIDRES 0.366798 Hz
AQ 1.3631488 sec
RG 202.5
DW 20.800 usec
DE 6.50 usec
TE 301.1 K
D1 2.0000000 sec
D11 0.0300000 sec
TDO 1

=====
CHANNEL f1
SFO1 100.6228298 MHz
NUC1 13C
P1 10.13 usec
PLW1 51.0000000 W

=====
CHANNEL f2
SFO2 400.1316005 MHz
NUC2 1H
CPDPRG[2] waltz16
PCPD2 90.00 usec
PLW2 11.50800037 W
PLW12 0.31077999 W

F2 - Processing parameters
SI 262144
SF 100.6128244 MHz
WDW EM
SSB 0
LB 1.00 Hz
GB 0
PC 1.40
SR 55.40 Hz

成都普菲德生物科技有限公司
http://www.sc-victory.com