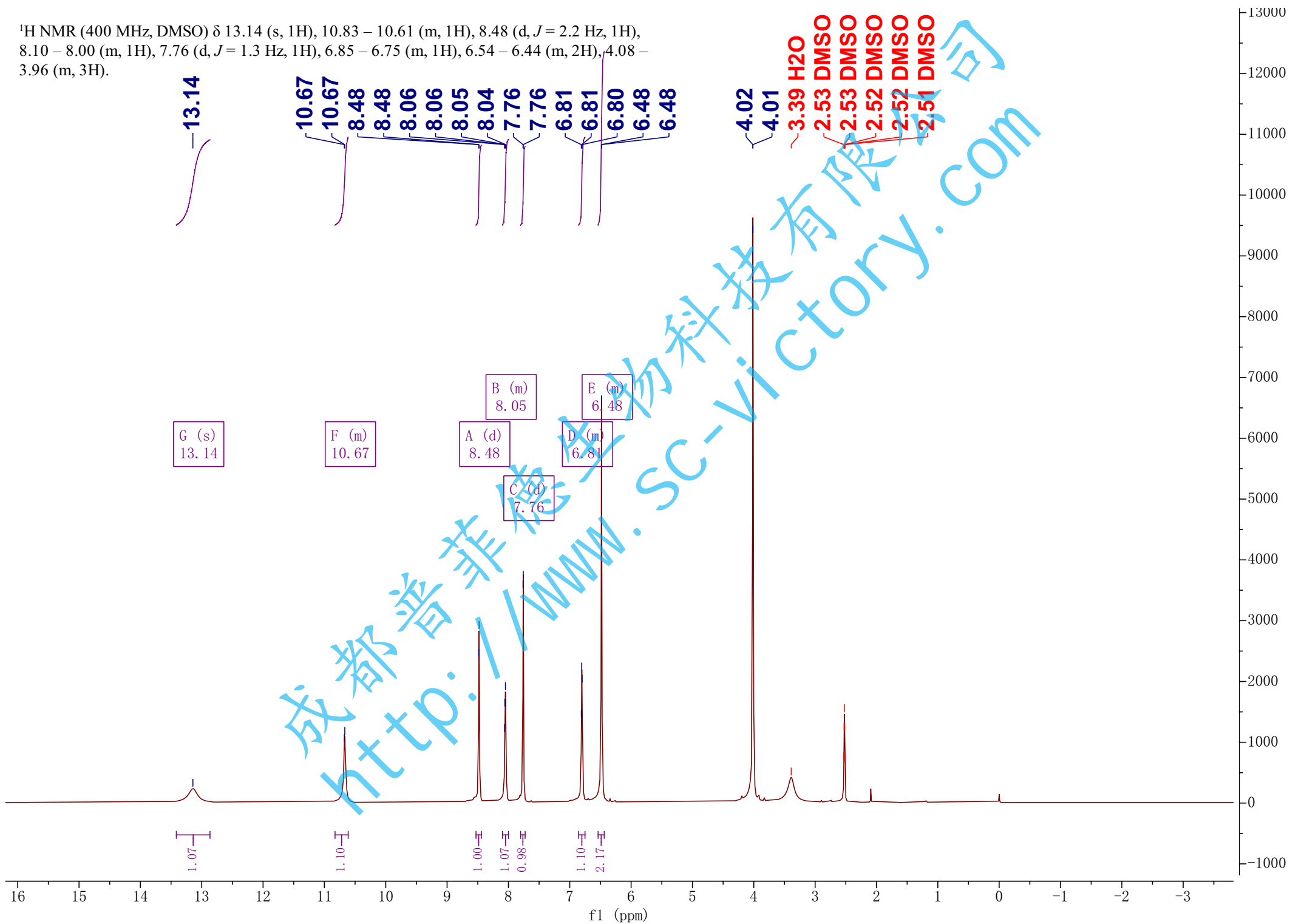


$^1\text{H}$  NMR (400 MHz, DMSO)  $\delta$  13.14 (s, 1H), 10.83 – 10.61 (m, 1H), 8.48 (d,  $J = 2.2$  Hz, 1H), 8.10 – 8.00 (m, 1H), 7.76 (d,  $J = 1.3$  Hz, 1H), 6.85 – 6.75 (m, 1H), 6.54 – 6.44 (m, 2H), 4.08 – 3.96 (m, 3H).



167.90  
161.30  
158.08  
146.15  
145.39  
142.60  
131.61  
123.88  
120.42  
117.76  
116.62  
112.13  
112.03  
103.65  
102.74  
99.59

56.13

