

6.670
6.589

6.003
6.001
5.987
5.985

3.805
3.733
3.690
3.408
2.590
2.571
2.556
2.537
2.332
2.328
2.299
2.295
2.102
2.080
2.069
2.047
2.026
1.998
1.994
1.852
1.838
1.822
1.807
1.697
1.680
1.667
1.651
0.939
0.921
0.678

BRUKER

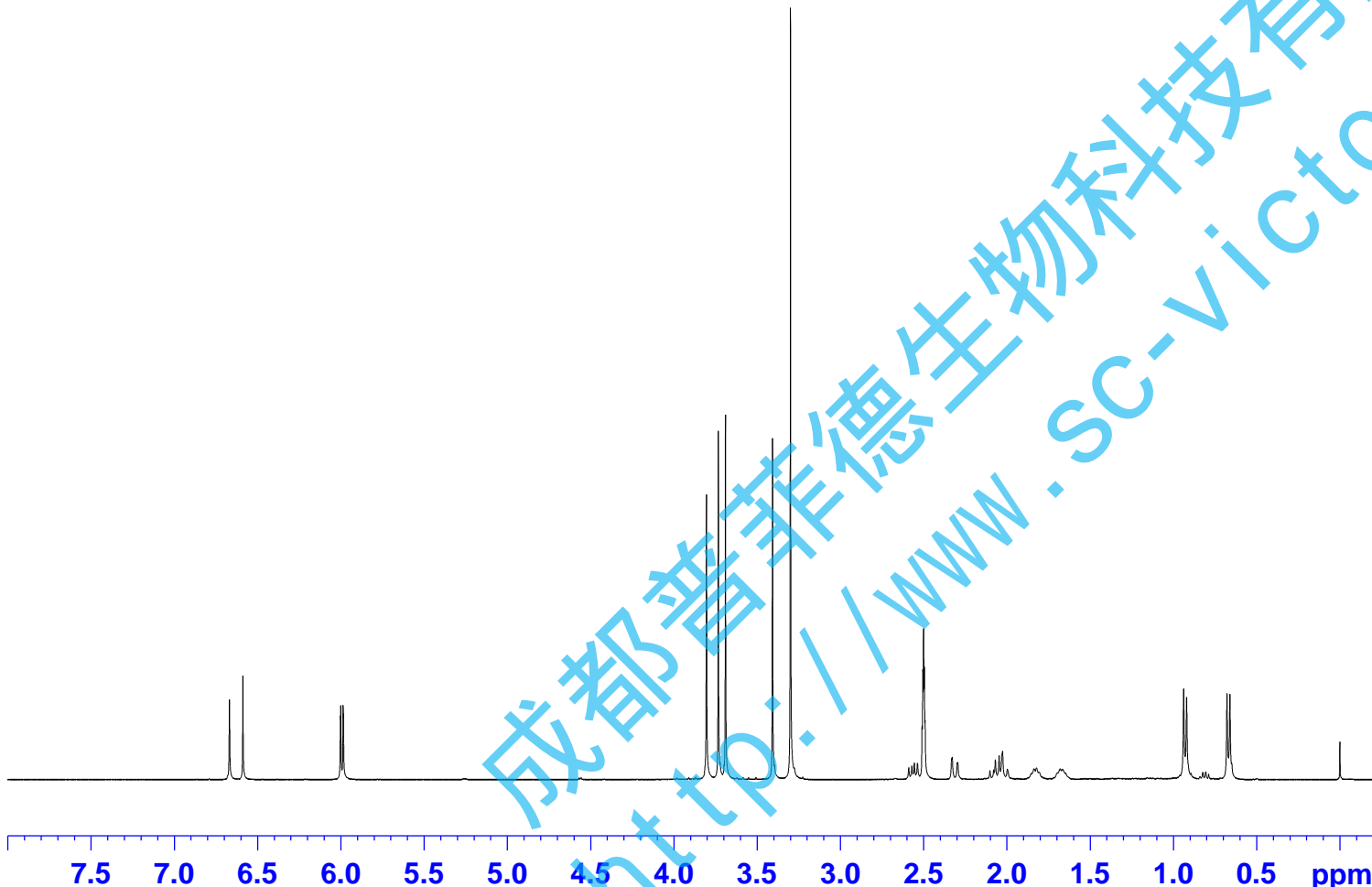
Current Data Parameters
 NAME WuWeiziYiSu-1H NMR DMSO
 EXPNO 1
 PROCNO 1

F2 - Acquisition Parameters

INSTRUM spect
 PROBHD 5 mm PABBO BB/
 PULPROG zg30
 TD 65536
 SOLVENT DMSO
 NS 16
 DS 2
 SWH 8012.820 Hz
 FIDRES 0.122266 Hz
 AQ 4.0894465 sec
 RG 202.5
 DW 62.400 usec
 DE 6.50 usec
 TE 301.2 K
 D1 1.00000000 sec
 TD0 1

===== CHANNEL f1 =====
 SFO1 400.1324710 MHz
 NUC1 1H
 P1 14.79 usec
 PLW1 11.50800037 W

F2 - Processing parameters
 SI 262144
 SF 400.1300031 MHz
 WDW EM
 SSB 0
 LB 0.30 Hz
 GB 0
 PC 1.00
 SR 3.11 Hz



1.00
1.00

2.00

3.01
2.97
3.01
3.00

1.14
1.05
2.15
1.16
1.13

3.30
0.43
3.11

成都普菲德生物科技有限公司
 www.sc-victory.com

BRUKER

Current Data Parameters
NAME WuWeiZiYiSu-13C NMR DMSO
EXPNO 1
PROCNO 1

F2 - Acquisition Parameters

INSTRUM spect
PROBHD 5 mm PABBO BB/
PULPROG zgig30
TD 65536
SOLVENT DMSO
NS 6000
DS 4
SWH 24038.461 Hz
FIDRES 0.366798 Hz
AQ 1.3631488 sec
RG 202.5
DW 20.800 usec
DE 6.50 usec
TE 301.2 K
D1 2.00000000 sec
D11 0.03000000 sec
TD0 1

==== CHANNEL f1 =====
SFO1 100.6228298 MHz
NUC1 13C
P1 10.13 usec
PLW1 51.00000000 W

==== CHANNEL f2 =====
SFO2 400.1316005 MHz
NUC2 1H
CPDPRG[2] waltz16
PCPD2 90.00 usec
PLW2 11.50800037 W
PLW12 0.31077999 W

F2 - Processing parameters

SI 262144
SF 100.6128263 MHz
WDW EM
SSB 0
LB 1.00 Hz
GB 0
PC 1.40
SR 57.28 Hz

151.23
150.99
148.14
140.43
139.39
137.16
134.06
133.46
122.56
120.90
110.70
102.65
100.61
60.29
59.95
58.82
55.64
40.32
38.23
34.69
32.81
21.03
12.43

