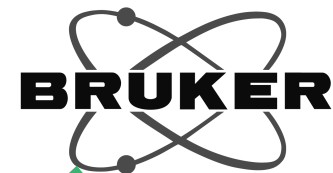


6.912
6.891
6.830
6.809
6.685
6.609
4.229
4.189
3.873
3.863
3.854
3.715
3.697
3.691
3.681
3.672
3.529
3.489
3.240
3.232
3.223
3.215
3.205
3.198
3.167
3.104
3.074
2.612
2.579
0.961
0.944



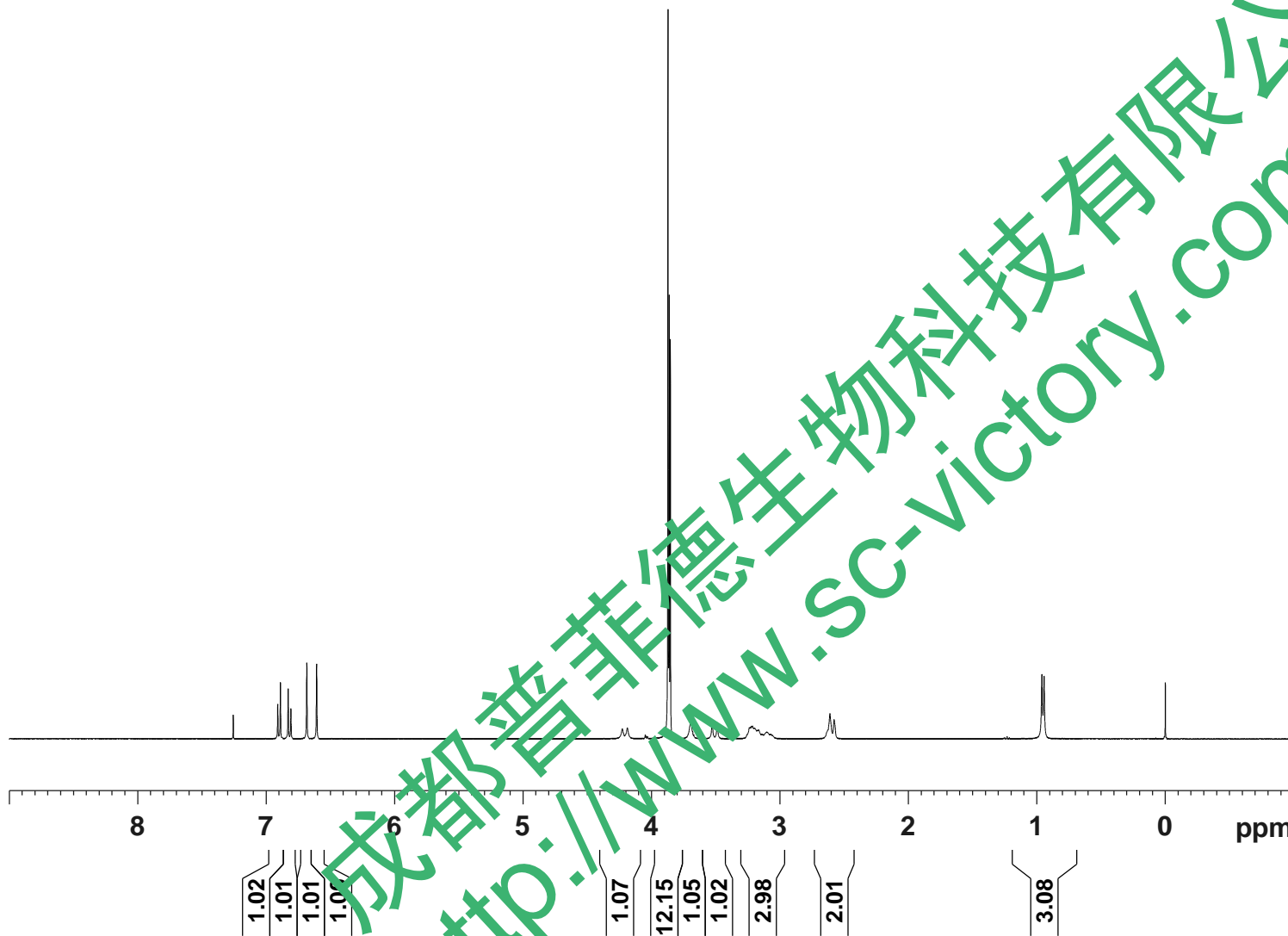
Current Data Parameters
NAME YanHuSuoJiaSu-1H NMR CDC13
EXPNO 2
PROCNO 1

F2 - Acquisition Parameters

INSTRUM spect
PROBHD 5 mm PABBO BB/
PULPROG zg30
TD 65536
SOLVENT CDC13
NS 5
DS 2
SWH 8012.820 Hz
FIDRES 0.122266 Hz
AQ 4.0894465 sec
RG 71.24
DW 62.400 usec
DE 6.50 usec
TE 301.1 K
D1 1.0000000 sec
TD0 1

===== CHANNEL f1 =====
SFO1 400.1324710 MHz
NUC1 1H
P1 15.36 usec
PLW1 11.50800037 W

F2 - Processing parameters
SI 65536
SF 400.1300103 MHz
WDW EM
SSB 0
LB 0.30 Hz
GB 0
PC 1.00
SINO 0



成都普菲德生物科技有限公司
http://www.sc-victory.com

150.07
147.72
147.26
144.92

134.93
128.39
123.98

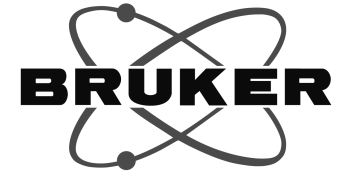
111.24
111.04
108.80

63.04
60.10
56.15
55.90
55.83
54.45
51.42

38.30

29.31

18.31



Current Data Parameters

NAME YanFuSuTiaSu-13C NMR CDCl3
EXPNO 2
PROCNO 1

F2 - Acquisition Parameters

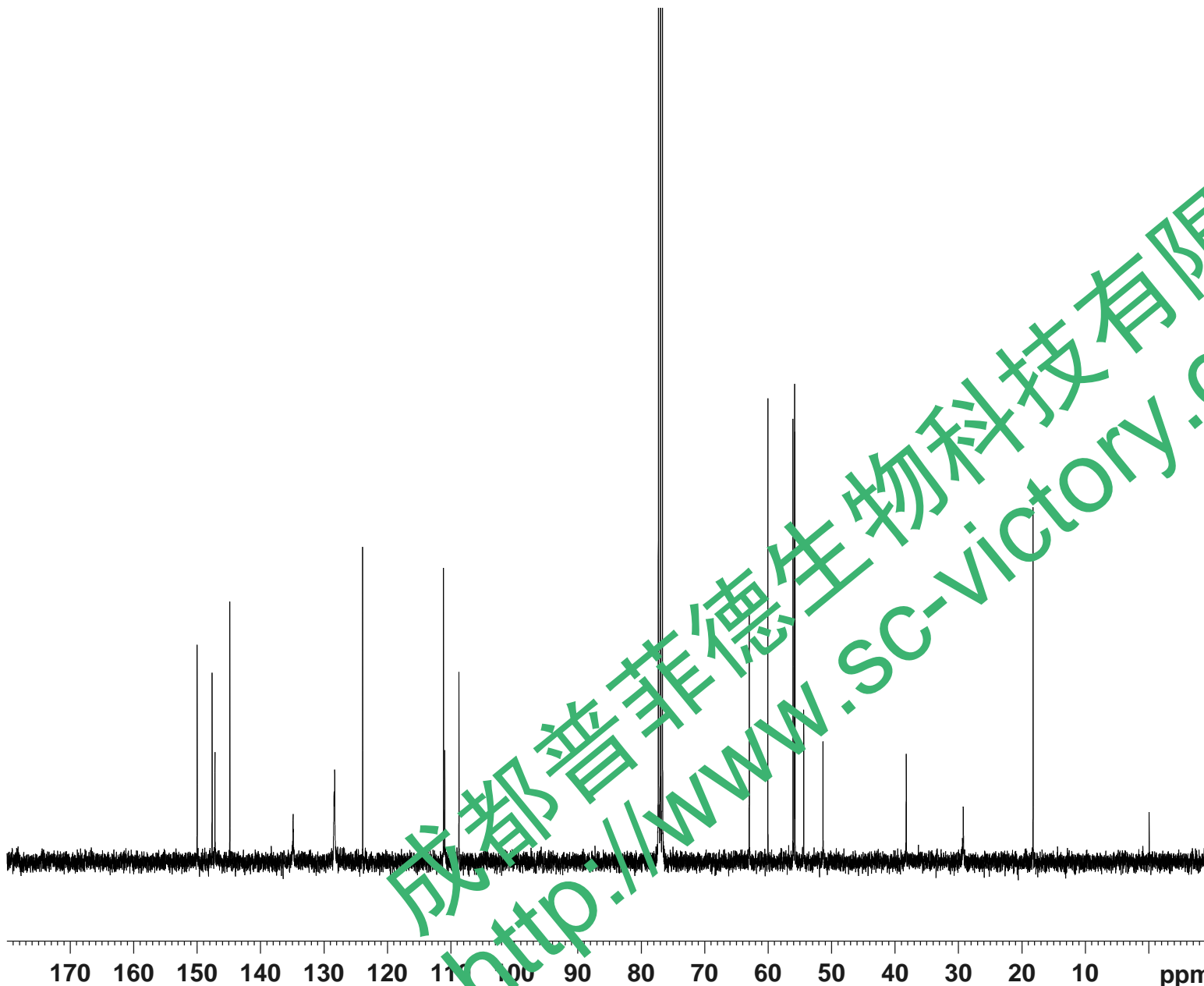
PROBHD 5 mm PABBO BB/
PULPROG zgig30
TD 65536
SOLVENT CDCl3
NS 555
DS 4
SWH 24038.461 Hz
FIDRES 0.366798 Hz
AQ 1.3631488 sec
RG 202.5
DW 20.800 usec
DE 6.50 usec
TE 301.2 K
D1 2.00000000 sec
D11 0.03000000 sec
TD0 1

==== CHANNEL f1 =====
SFO1 100.6228298 MHz
NUC1 13C
P1 10.79 usec
PLW1 51.00000000 W

==== CHANNEL f2 =====
SFO2 400.1316005 MHz
NUC2 1H
CPDPRG[2] waltz16
PCPD2 90.00 usec
PLW2 11.50800037 W
PLW12 0.33519000 W

F2 - Processing parameters

SI 262144
SF 100.6127685 MHz
WDW EM
SSB 0
LB 1.00 Hz
GB 0
PC 1.40
SINO 0



成都普菲德生物科技有限公司
<http://www.sc-victory.com>