

**BRUKER**

Current Data Pufeide

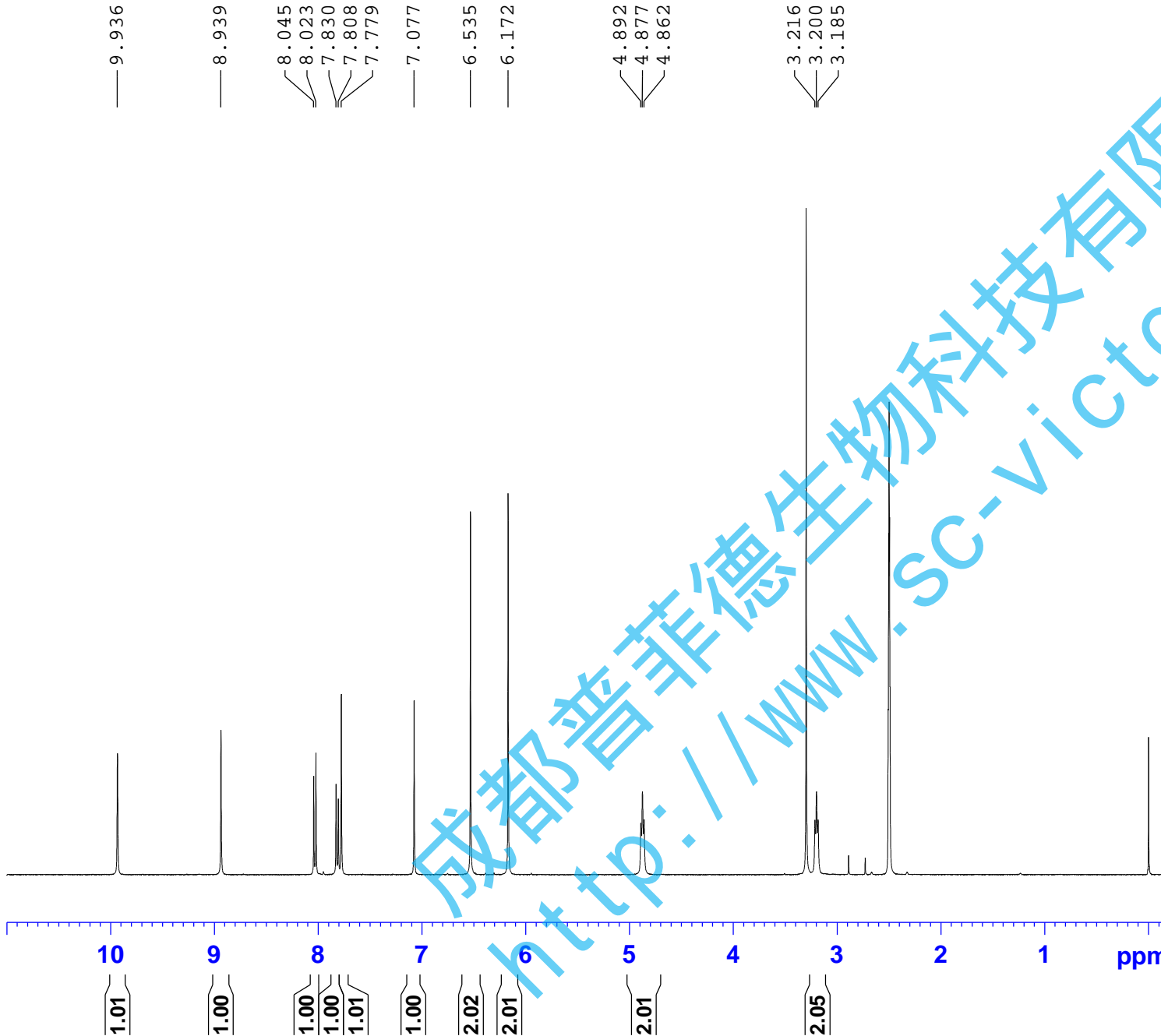
NAME YSHLJ-1H NMR DMSO  
EXPNO 1  
PROCNO 1

F2 - Acquisition Parameters

INSTRUM spect  
PROBHD 5 mm PABBO BB/  
PULPROG zg30  
TD 65536  
SOLVENT DMSO  
NS 16  
DS 2  
SWH 8012.820 Hz  
FIDRES 0.122266 Hz  
AQ 4.0894465 sec  
RG 202.5  
DW 62.400 usec  
DE 6.50 usec  
TE 301.1 K  
D1 1.00000000 sec  
TD0 1

==== CHANNEL f1 =====  
SFO1 400.1324710 MHz  
NUC1 1H  
P1 14.79 usec  
PLW1 11.50800037 W

F2 - Processing parameters  
SI 65536  
SF 400.1300032 MHz  
WDW EM  
SSB 0  
LB 0.30 Hz  
GB 0  
PC 1.00  
SR 3.16 Hz



**BRUKER**

Current Data File  
NAME YS131 NMR DMSO  
EXPNO 1  
PROCNO 1

F2 - Acquisition Parameters

INSTRUM spect  
PROBHD 5 mm PABBO BB/  
PULPROG zgig30  
TD 65536  
SOLVENT DMSO  
NS 2048  
DS 4  
SWH 24038.461 Hz  
FIDRES 0.366798 Hz  
AQ 1.3631488 sec  
RG 202.5  
DW 20.800 usec  
DE 6.50 usec  
TE 301.2 K  
D1 2.0000000 sec  
D11 0.0300000 sec  
TD0 1

==== CHANNEL f1 =====  
SFO1 100.6228298 MHz  
NUC1 13C  
P1 10.13 usec  
PLW1 51.0000000 W

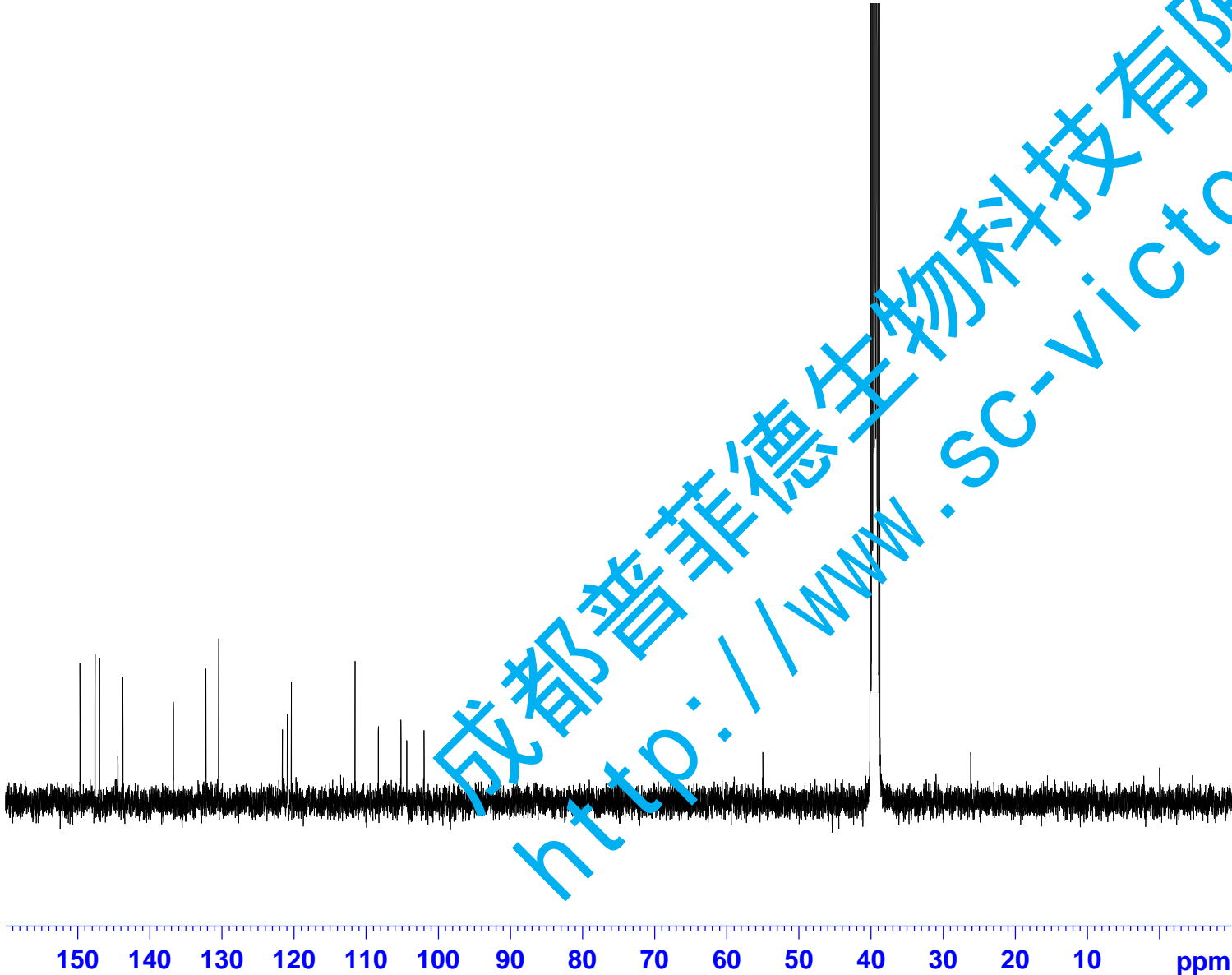
==== CHANNEL f2 =====  
SFO2 400.1316005 MHz  
NUC2 1H  
CPDPRG[2] waltz16  
PCPD2 90.00 usec  
PLW2 11.50800037 W  
PLW12 0.31077999 W

F2 - Processing parameters  
SI 262144  
SF 100.6128263 MHz  
WDW EM  
SSB 0  
LB 1.00 Hz  
GB 0  
PC 1.40  
SR 57.28 Hz

149.72  
147.63  
147.00  
143.77  
136.76  
132.25  
130.47  
121.64  
120.95  
120.91  
120.41  
111.57  
108.34  
105.21  
104.41  
102.00

55.02

26.19



成都普菲德生物科技有限公司  
<http://www.sc-victory.com>