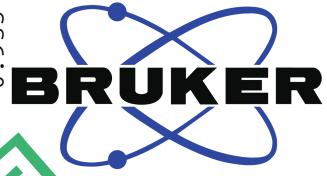


2.962
2.885
2.696
2.692
2.678
2.663
2.660
2.650
2.646
2.632
2.617
2.614
2.428
2.425
2.413
2.410
2.398
2.392
2.373
2.364
2.354
2.335
2.182
2.168
2.163
2.153
2.148
2.134
2.128
2.119
2.114
2.100
1.855
1.849
1.840
1.835
1.831
1.821
1.816
1.806
1.802
1.797
1.788
1.782
1.549
1.531
1.512
1.494
1.476
1.457
0.972
0.954
0.935



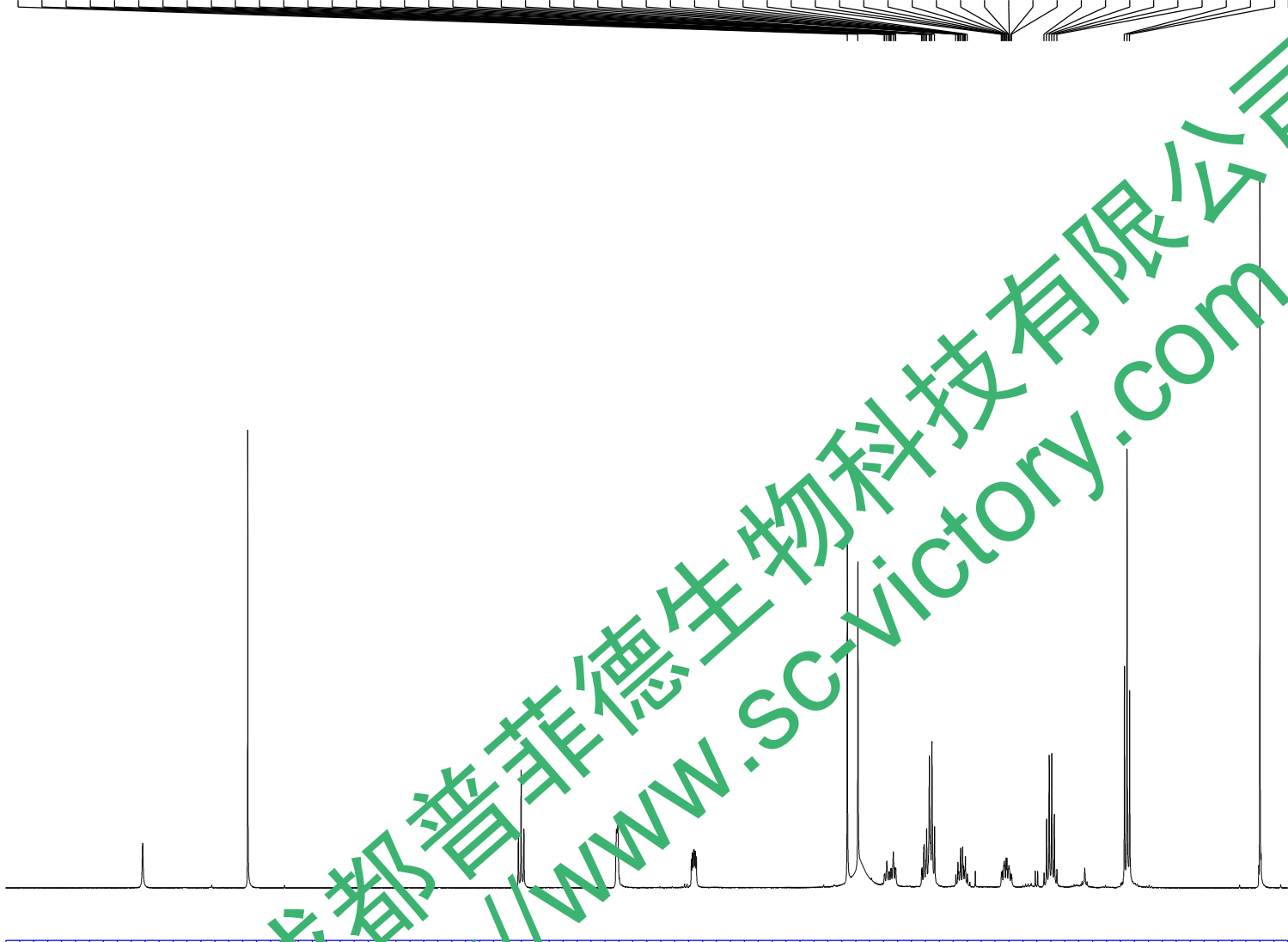
Current Data Pufeide
NAME YangChuanXiongNeizhi H-1H NMR CDC13
EXPNO 2
PROCNO 1

F2 - Acquisition Parameters

Time 18.24
INSTRUM spect
PROBHD 5 mm PABBO BB/
PULPROG zg30
TD 65536
SOLVENT CDC13
NS 16
DS 2
SWH 8012.820 Hz
FIDRES 0.122266 Hz
AQ 4.0894465 sec
RG 181.7
DW 62.400 usec
DE 6.50 usec
TE 301.1 K
D1 2.00000000 sec
TDO 1

==== CHANNEL f1 =====
SF01 400.1324710 MHz
NUC1 1H
P1 14.79 usec
PLW1 11.50800037 W

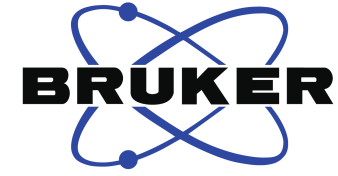
F2 - Processing parameters
SI 262144
SF 400.1300076 MHz
WDW EM
SSB 0
LB 0.30 Hz
GB 0
PC 1.00
SR 7.59 Hz



8.5 8.0 7.5 7.0 6.5 6.0 5.5 5.0 4.5 4.0 3.5 3.0 2.5 2.0 1.5 1.0 0.5 ppm

0.99 1.00 0.96 4.86 1.28 3.09 1.07 1.05 2.03 3.20

成都普菲德生物科技有限公司
http://www.sc-victory.com



Current Data Pufeide
 NAME YangChuanXiongNeiZhi H-13C NMR CDC13
 EXPNO 1
 PROCNO 1

F2 - Acquisition Parameters

Time 18.36
 INSTRUM spect
 PROBHD 5 mm PABBO BB/
 PULPROG zgpg30
 TD 65536
 SOLVENT CDCl3
 NS 198
 DS 198
 SWH 24038.761 Hz
 FIDRES 0.366798 Hz
 ACQ 1.3631488 sec
 RG 202.5
 JW 20.80 usec
 DS 50 usec
 TE 301.1 K
 PI 2.000000 sec
 D1 0.000000 sec
 TD0 1

==== CHANNEL f1 =====
 SFO1 100.6228298 MHz
 NUC1 13C
 P1 10.13 usec
 PLW1 51.0000000 W

==== CHANNEL f2 =====
 SFO2 400.1316005 MHz
 NUC2 1H
 CPDPRG[2] waltz16
 PCPD2 90.00 usec
 PLW2 11.50800037 W
 PLW12 0.31077999 W

F2 - Processing parameters
 SI 262144
 SF 100.6127656 MHz
 WDW EM
 SSB 0
 LB 1.00 Hz
 GB 0
 PC 1.40
 SR -3.39 Hz

