

# Display Report

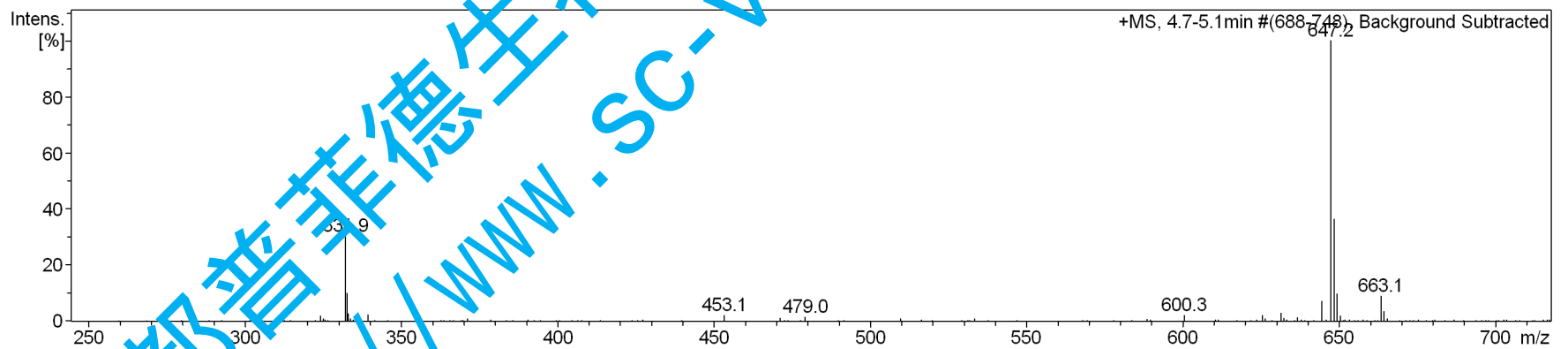
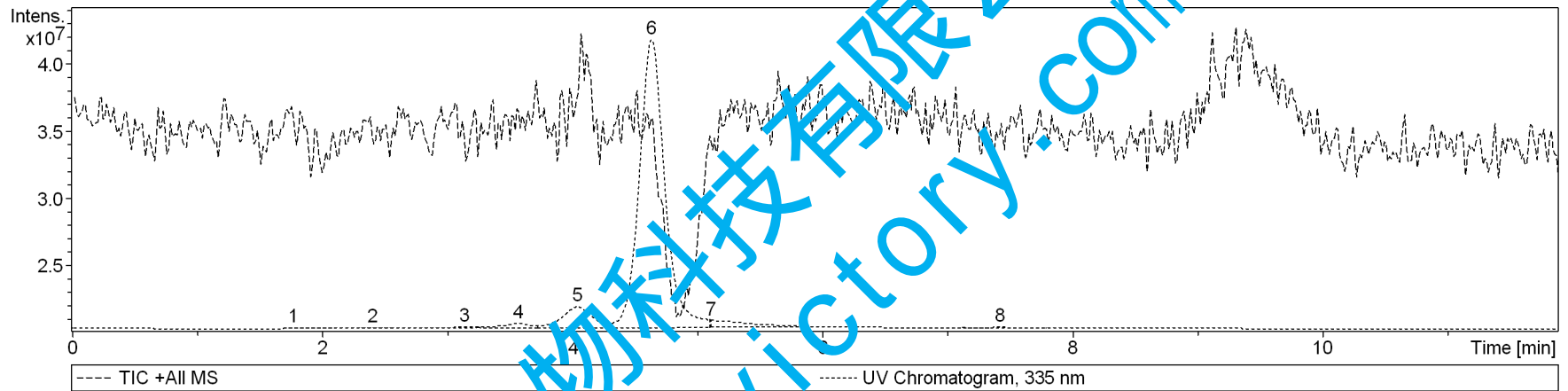
## Analysis Info

Analysis Name D:\Data\test\0303\yimaoruihuaxingan\_10\_01\_814.d  
Method 814.m  
Sample Name yimaoruihuaxingan  
Comment

Operator  
Instrument  
bruker  
amaZon SL

## Acquisition Parameter

Ion Source Type	ESI	Ion Polarity	Negative	Alternating Ion Polarity	on
Mass Range Mode	UltraScan	Scan Begin	70 m/z	Scan End	1200 m/z
Capillary Exit	-140.0 V	n/a	n/a	Trap Drive	50.6
Accumulation Time	24798 $\mu$ s	Averages	5 Spectra	Auto MS/MS	off



# Display Report

## Analysis Info

Analysis Name D:\Data\test\0303\yimaoruihuaxingan\_10\_01\_814.d  
Method 814.m  
Sample Name yimaoruihuaxingan  
Comment

Operator  
Instrument bruker  
amaZon SL

## Acquisition Parameter

Ion Source Type	ESI	Ion Polarity	Negative	Alternating Ion Polarity	on
Mass Range Mode	UltraScan	Scan Begin	70 m/z	Scan End	1200 m/z
Capillary Exit	-140.0 V	n/a	n/a	Trap Drive	50.6
Accumulation Time	24798 $\mu$ s	Averages	5 Spectra	Auto MS/MS	off

