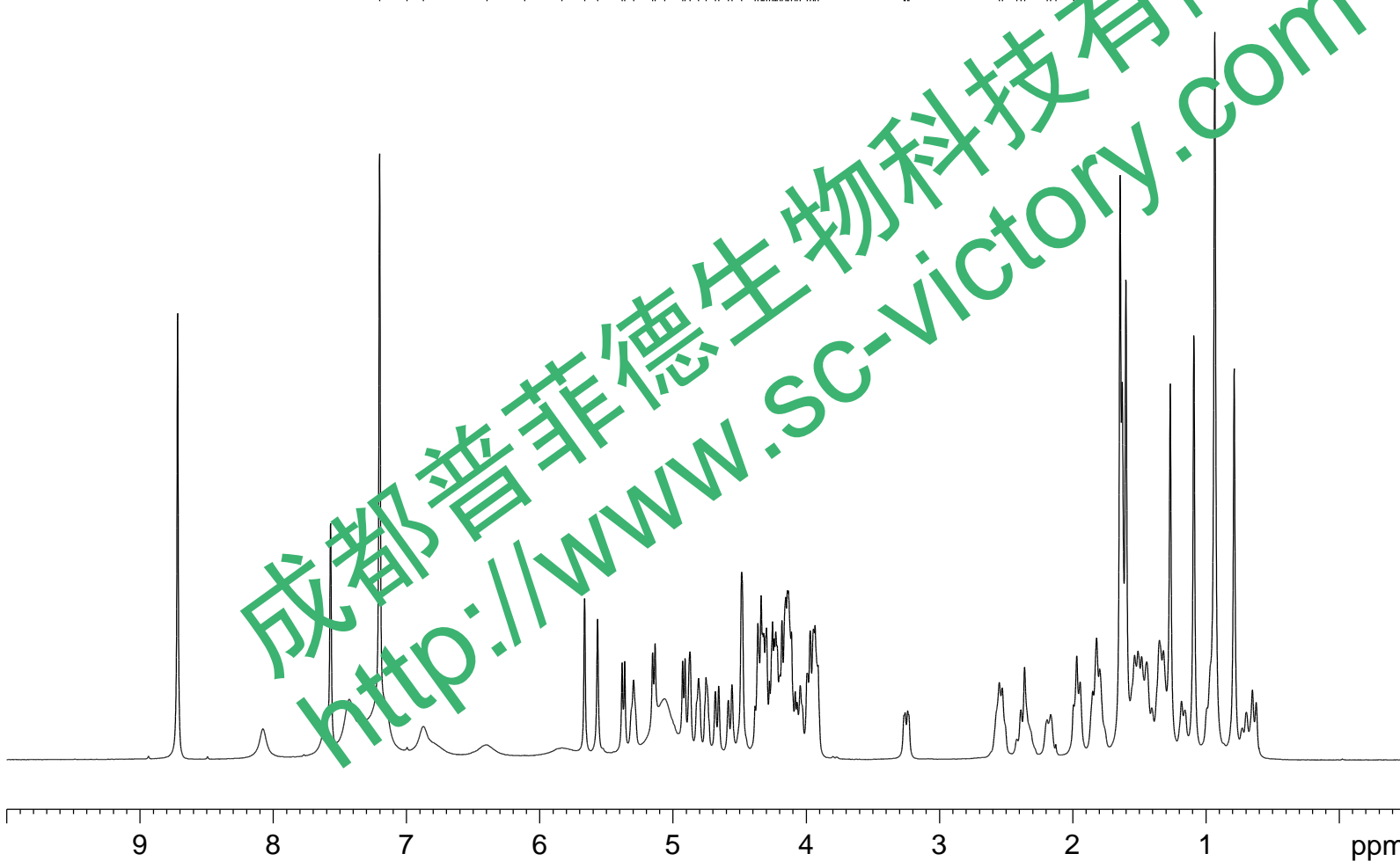




Rc-1H

7.20150
6.99560
6.87410
6.39720
6.11340
5.83470
5.66280
5.56560
5.38110
5.36240
5.29560
5.15270
5.13370
5.06260
4.92750
4.90910
4.87230
4.80810
4.75160
4.68150
4.65700
4.58420
4.55660
4.48420
4.38420
4.36240
4.33820
4.32700
4.31800
4.29760
4.27510
4.25290
4.24090
4.22880
4.21830
4.19610
4.18180
4.15310
4.14070
4.13340
4.11090
4.08270
4.06850
4.04460
3.99300
3.97030
3.94560
3.93340
3.91110
3.26600
3.25780
3.23820
3.23010
2.56060
2.53860
2.19190
2.38830
2.36600
2.10150
2.16520
2.11760
1.92350
1.96890
1.94340



1.0462
3.4673
2.1009
1.2921
1.0015
1.2046
1.2528
1.2347
1.3367
2.1304
2.4446
1.6000
0.9399
1.0456
1.1352
1.0748
1.0716
2.0598
4.3397
2.7634
6.4918
3.9543
1.0000
2.0627
2.1249
1.1988
2.2018
3.3200
8.9931
5.1392
2.9265
3.3461
1.0721
3.1320
7.1338
3.1081
2.0164

Current Data Parameters
NAME Proton2
EXPNO 546
PROCNO 1

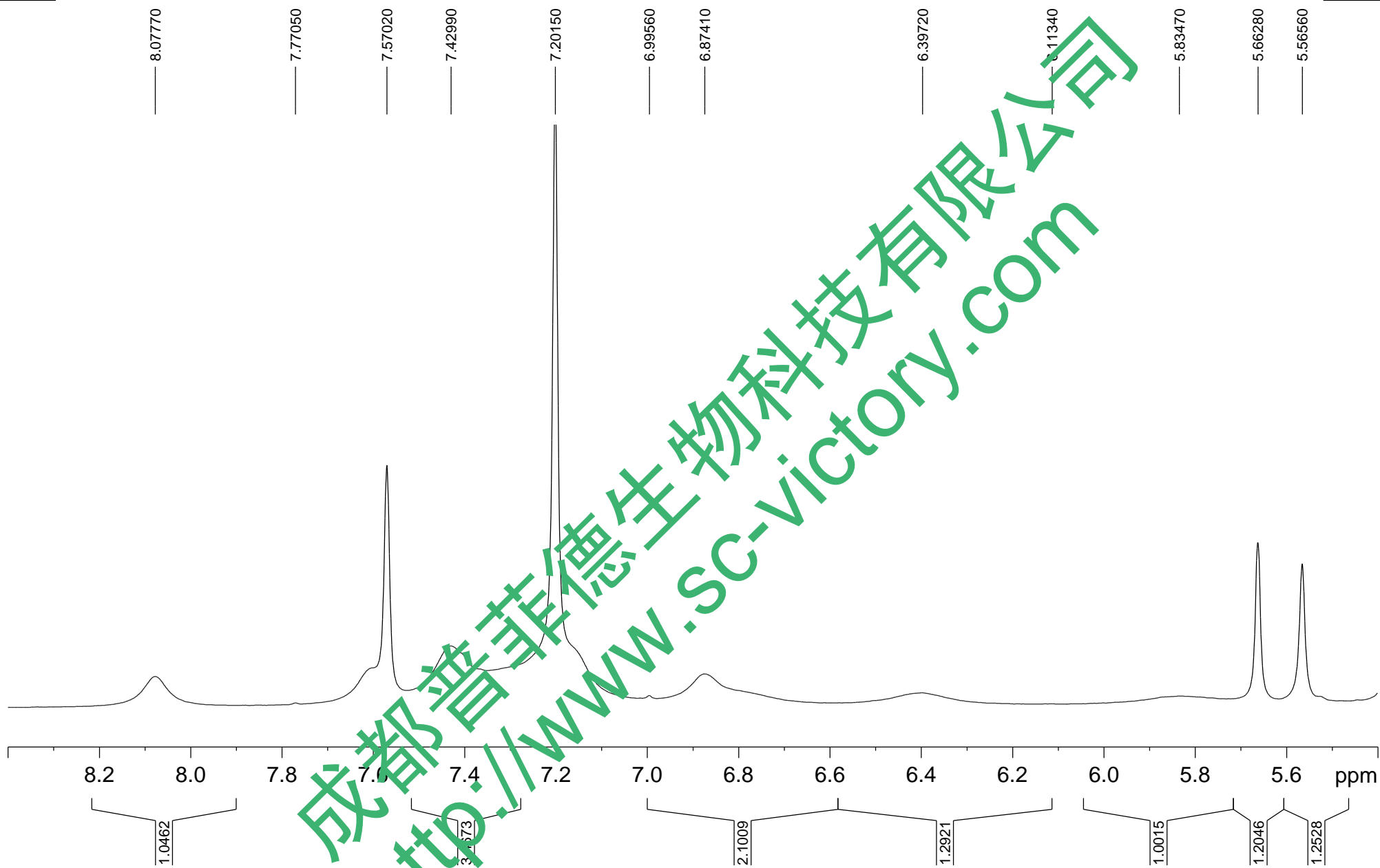
F2 - Acquisition Parameters
Date_ 20121128
Time 9.39
INSTRUM av400
PROBHD 5 mm DUL 13C-1
PULPROG zg30
TD 65536
SOLVENT Pyr
NS 16
DS 0
SWH 13966.480 Hz
FIDRES 0.213112 Hz
AQ 2.3462389 sec
RG 16
DW 35.800 usec
DE 6.00 usec
TE 293.8 K
D1 1.00000000 sec
MCREST 0.00000000 sec
MCWRK 0.01500000 sec

===== CHANNEL f1 =====
NUC1 1H
P1 11.60 usec
PL1 -2.00 dB
SFO1 400.1322394 MHz

F2 - Processing parameters
SI 32768
SF 400.1299947 MHz
WDW EM
SSB 0
LB 2.00 Hz
GB 0
PC 1.00



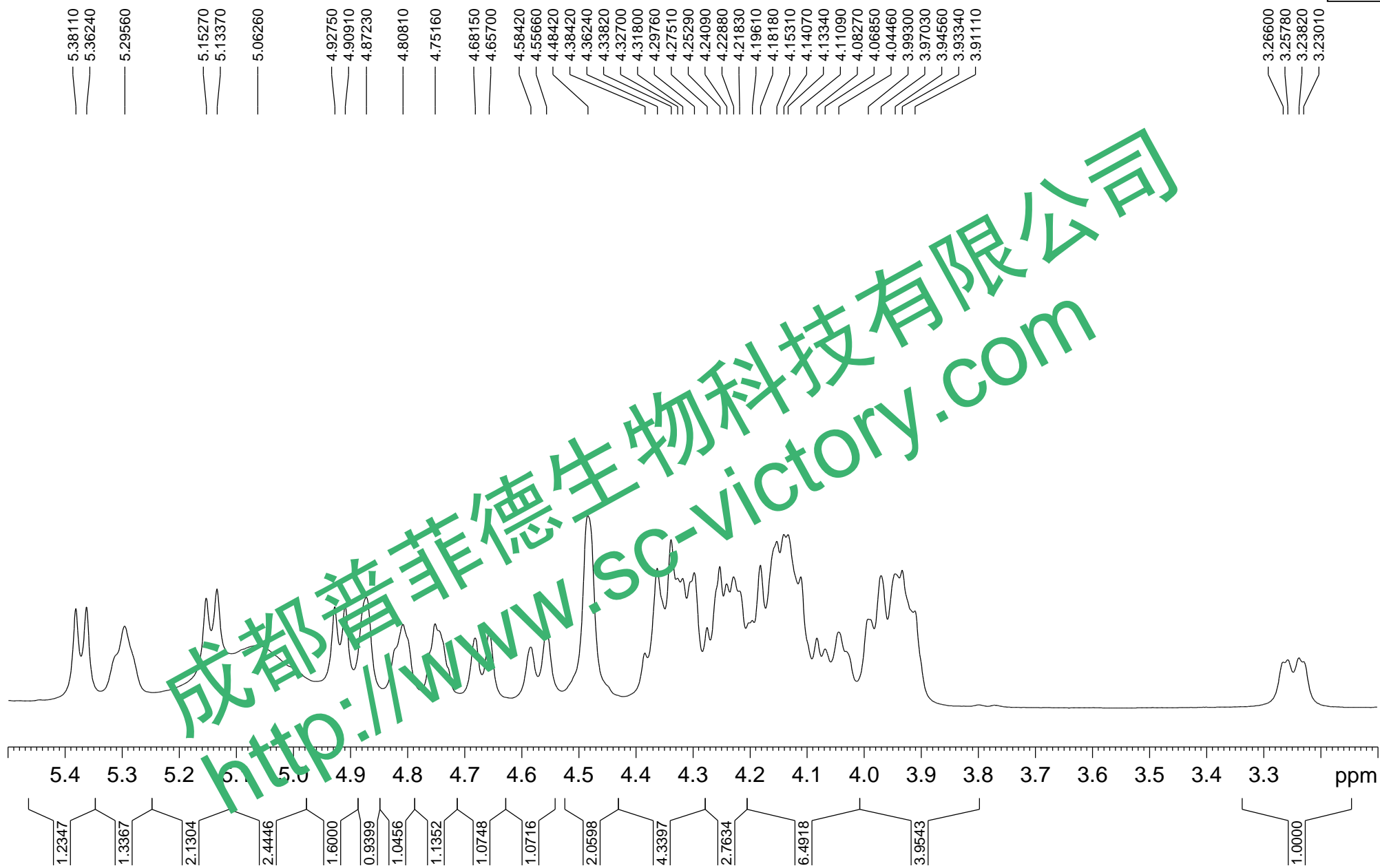
Rc-1H



成都普菲德生物科技有限公司
<http://www.sc-victory.com>



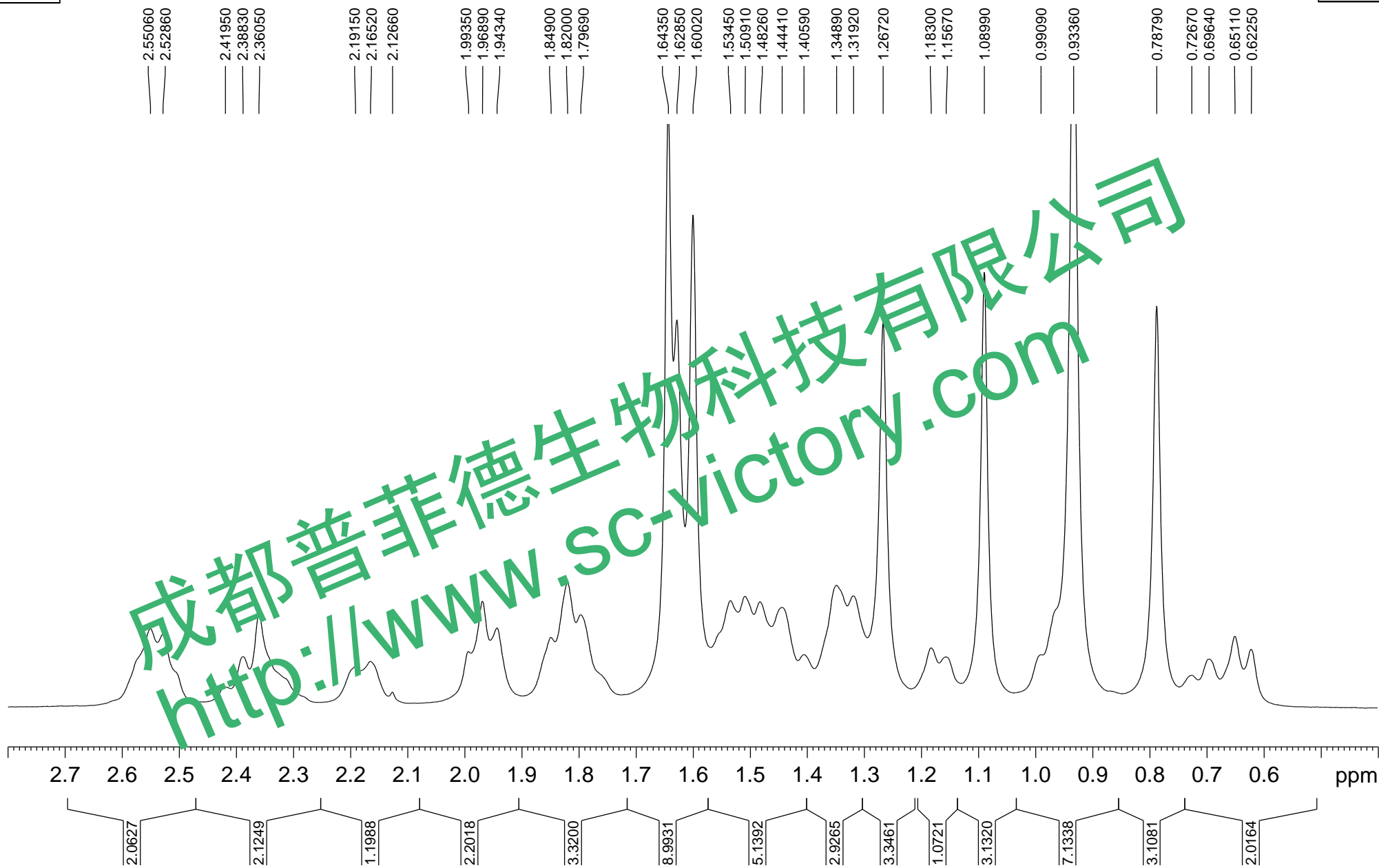
Rc-1H



成都普菲德生物科技有限公司
<http://www.sc-victory.com>



Rc-1H





Rc-13C

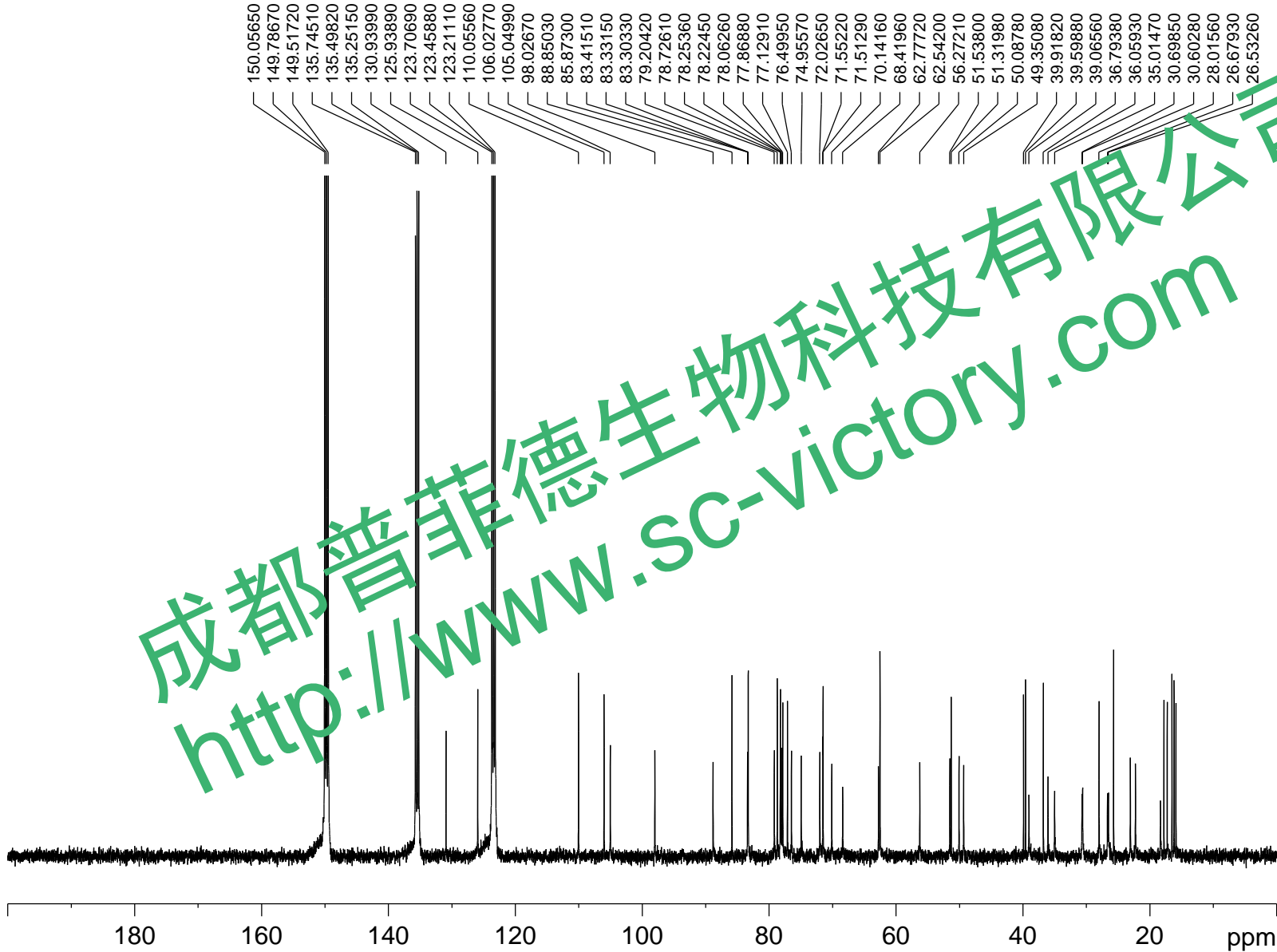
Current Data Parameters
 NAME Carbon
 EXPNO 191
 PROCNO 1

F2 - Acquisition Parameters
 Date_ 20121128
 Time 10.15
 INSTRUM av400
 PROBHD 5 mm DUL 13C-1
 PULPROG zgdc
 TD 65536
 SOLVENT Pyr
 NS 1024
 DS 0
 SWH 30120.482 Hz
 FIDRES 0.459602 Hz
 AQ 1.0879476 sec
 RG 16384
 DW 16.600 usec
 DE 6.00 usec
 TE 294.4 K
 D1 2.00000000 sec
 d11 0.03000000 sec
 MCREST 0.00000000 sec
 MCWRK 0.01500000 sec

===== CHANNEL f1 =====
 NUC1 13C
 P1 9.00 usec
 PL1 -2.00 dB
 SFO1 100.6226304 MHz

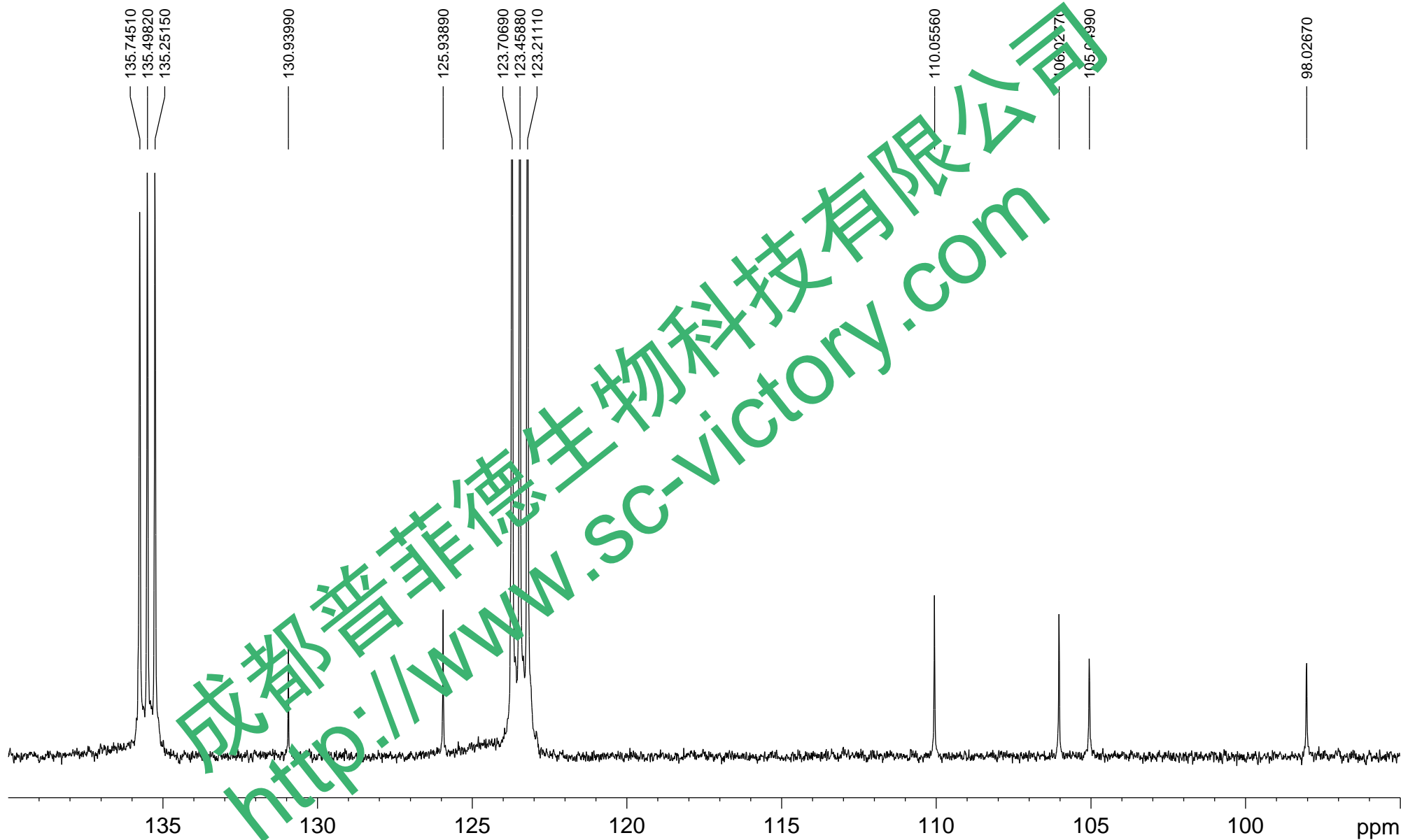
===== CHANNEL f2 =====
 CPDPRG2 waltz16
 NUC2 1H
 PCPD2 80.00 usec
 PL2 -2.00 dB
 PL12 14.77 dB
 SFO2 400.1316005 MHz

F2 - Processing parameters
 SI 32768
 SF 100.6127533 MHz
 WDW EM
 SSB 0
 LB 1.00 Hz
 GB 0
 PC 1.40



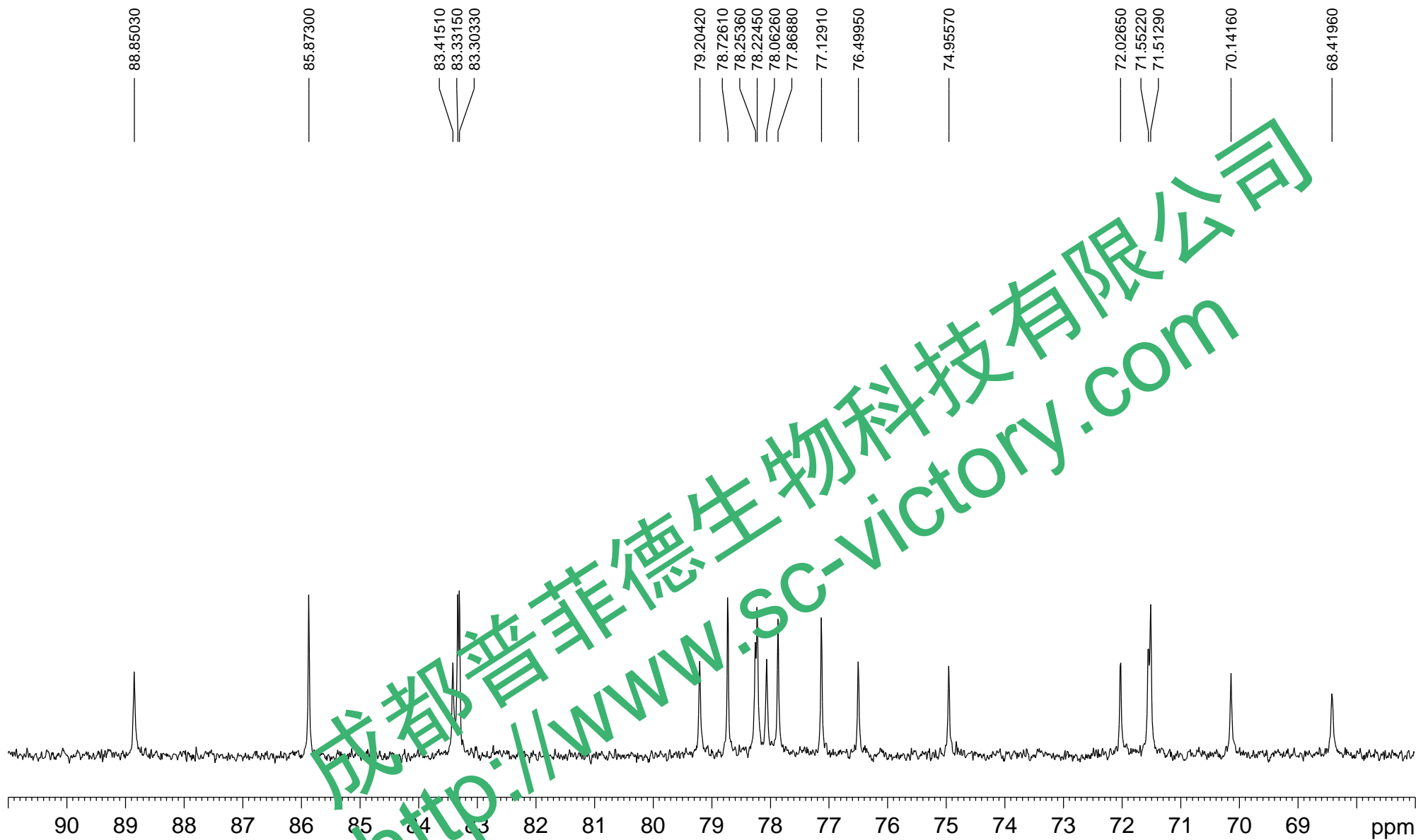


Rc-13C





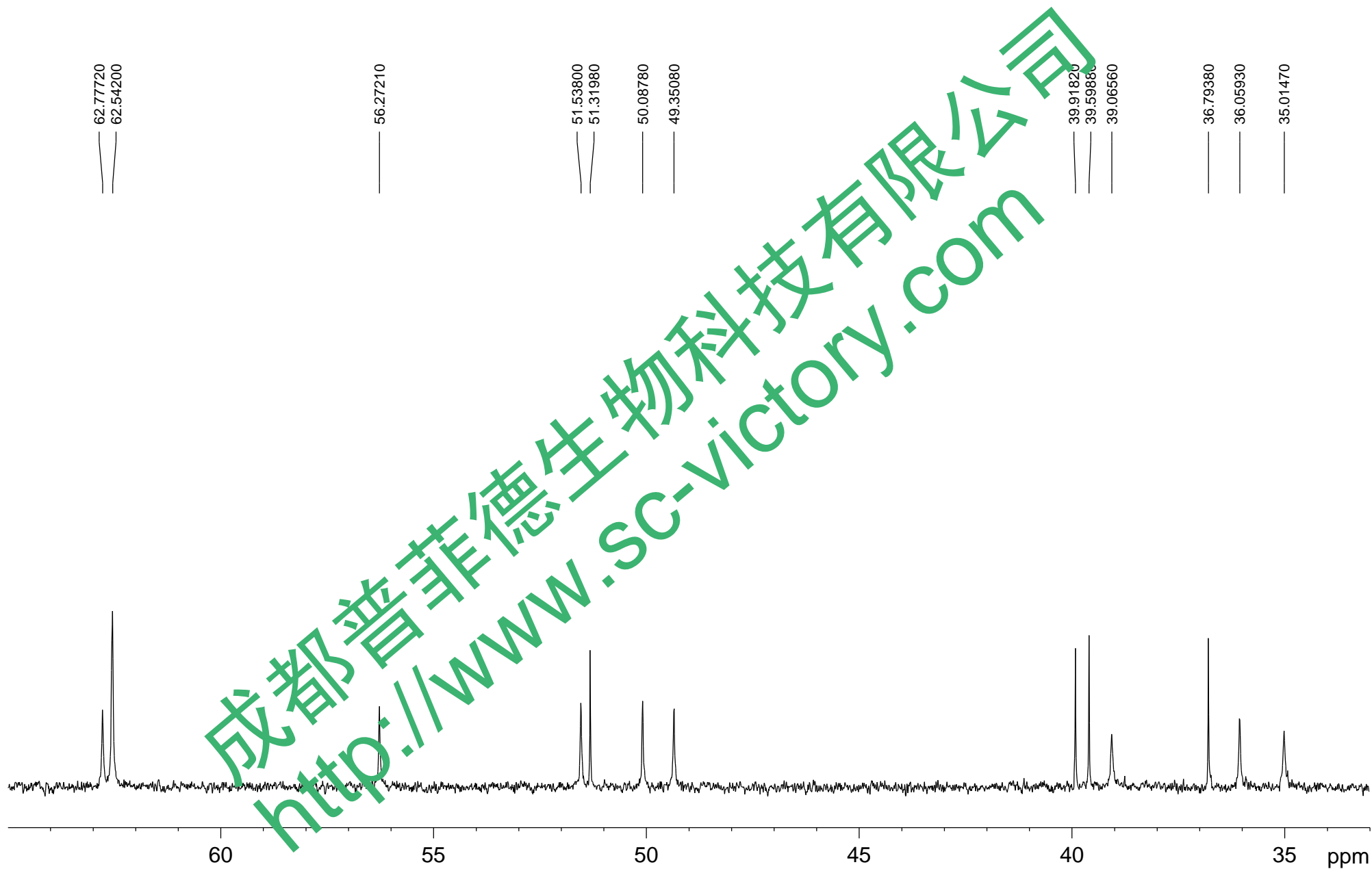
Rc-13C



成都普菲德生物科技有限公司
<http://www.sc-victory.com>



Rc-13C





Rc-13C

