

Current Data Parameters
NAME R
EXPNO 2
PROCNO 1

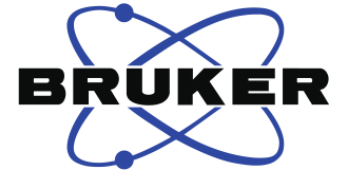
F2 - Acquisition Parameters
Date_ 20141210
Time 17.11
INSTRUM spect
PROBHD 5 mm PABBO BB-
PULPROG zgpg30
TD 65536
SOLVENT MeOD
NS 1024
DS 4
SWH 24038.461 Hz
FIDRES 0.366798 Hz
AQ 1.3631988 sec
RG 194.85
DW 20.800 usec
DE 6.50 usec
TE 300.0 K
D1 2.0000000 sec
D11 0.03000000 sec
TD0 1

==== CHANNEL f1 =====
NUC1 13C
P1 9.24 usec
PLW1 95.0000000 W
SFO1 100.6228293 MHz

==== CHANNEL f2 =====
CPDPRG2 waltz16
NUC2 1H
PCPD2 80.00 usec
PLW2 19.0000000 W
PLW12 0.2529200 W
PLW13 0.1618700 W
SFO2 400.1316005 MHz

F2 - Processing parameters
SI 32768
SF 100.6126279 MHz
WDW EM
SSB 0
LB 1.00 Hz
GB 0
PC 1.40

成都普菲德生物科技有限公司
<http://www.sc-victory.com>



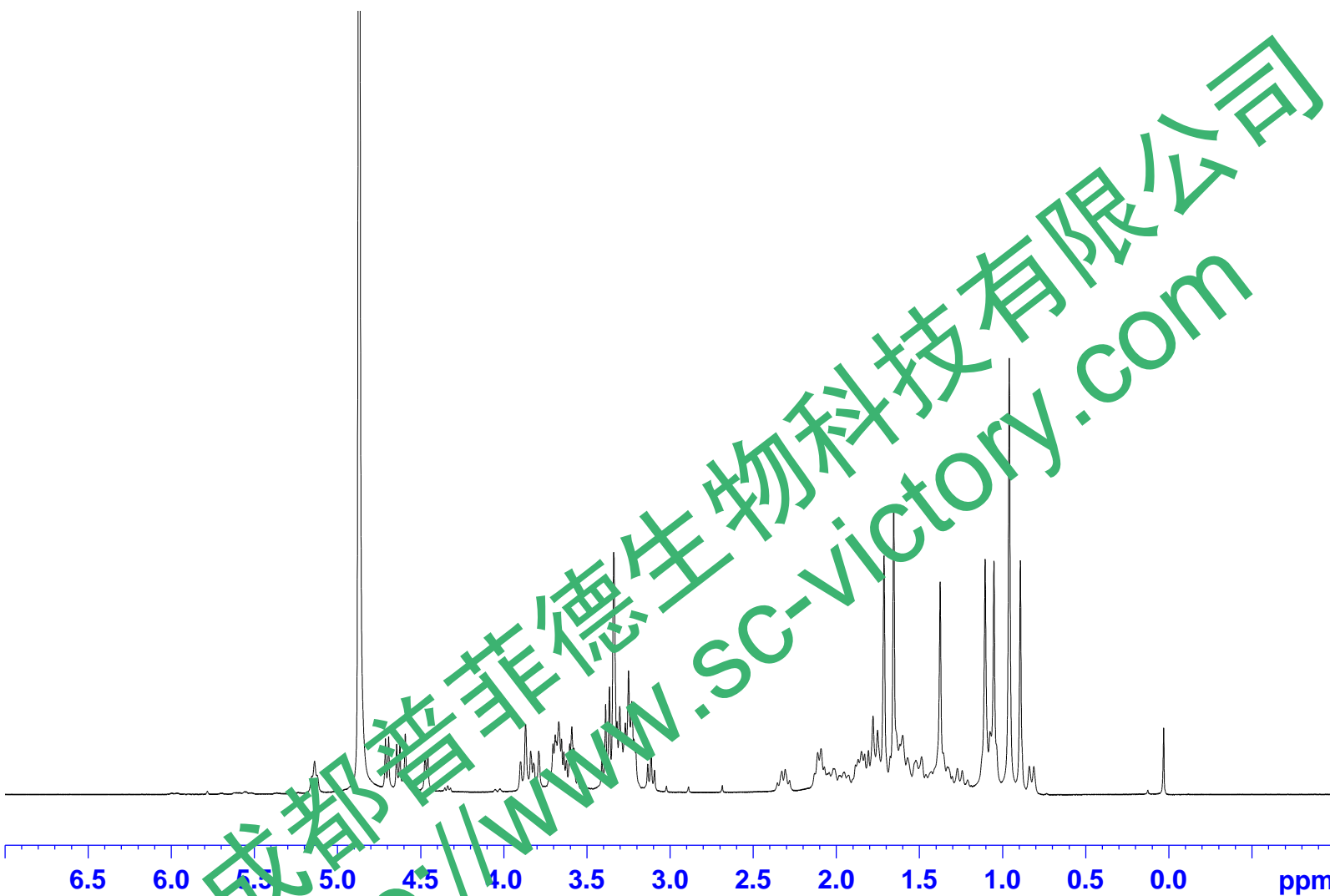
4.869
4.711
4.692
4.644
4.624
4.592
4.474
4.456
3.868
3.838
3.789
3.703
3.690
3.669
3.652
3.638
3.603
3.590
3.577
3.408
3.387
3.364
3.338
3.318
3.302
3.268
3.249
3.229
3.216
3.113
2.111
2.091
1.848
1.829
1.806
1.778
1.751
1.712
1.675
1.654
1.600
1.571
1.487
1.374
1.104
1.074
1.051
0.959
0.892
0.030

Current Data Parameters
NAME Rd
EXPNO 1
PROCNO 1

F2 - Acquisition Parameters
Date_ 20141210
Time 17.07
INSTRUM spect
PROBHD 5 mm PABBO BB-
PULPROG zg30
TD 65536
SOLVENT MeOD
NS 16
DS 2
SWH 8223.685 Hz
FIDRES 0.125483 Hz
AQ 3.9846387 sec
RG 59.05
DW 60.800 usec
DE 6.50 usec
TE 299.5 K
D1 1.0000000 sec
TD0 1

==== CHANNEL f1 =====
NUC1 1H
P1 9.23 usec
PLW1 20.0000000 W
SFO1 400.1324710 MHz

F2 - Processing parameters
SI 65536
SF 400.1299974 MHz
WDW EM
SSB 0
LB 0.30 Hz
GB 0
PC 1.00



1.09
1.12
0.99
0.82
1.01
2.93
3.92
1.80
2.96
7.06
0.95
1.11
4.16
5.00
2.96
4.15
4.26
5.89
7.35
5.21
2.55
0.82

成都普菲德生物科技有限公司
http://www.sc-victory.com