

# Display Report

## Analysis Info

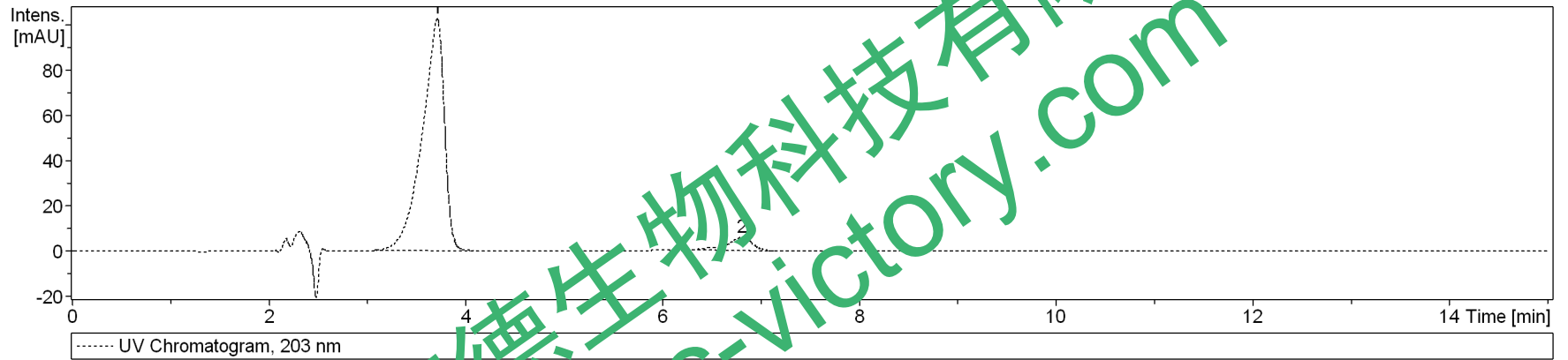
Analysis Name D:\Data\test\20141209\Rd\_87\_01\_432.d  
Method 432.m  
Sample Name Rd  
Comment

Acquisition Date 12/9/2014 6:09:22 PM

Operator bruker  
Instrument amaZon SL

## Acquisition Parameter

Ion Source Type	ESI	Ion Polarity	Negative	Alternating Ion Polarity	on
Mass Range Mode	UltraScan	Scan Begin	70 m/z	Start End	2200 m/z
Capillary Exit	-140.0 V	n/a	n/a	Trap Drive	50.6
Accumulation Time	58189 $\mu$ s	Averages	5 Spectra	Auto MS/MS	off



#	RT [min]	Area	Area Frac %
1	3.7	1622.30	38.1
2	6.8	107.19	2.2

# Display Report

## Analysis Info

Analysis Name D:\Data\test\20141209\Rd\_87\_01\_432.d  
Method 432.m  
Sample Name Rd  
Comment

Acquisition Date 12/9/2014 6:09:22 PM

Operator bruker  
Instrument amaZon SL

## Acquisition Parameter

Ion Source Type	ESI	Ion Polarity	Negative	Alternating Ion Polarity	on
Mass Range Mode	UltraScan	Scan Begin	70 m/z	Scan End	2000 m/z
Capillary Exit	-140.0 V	n/a	n/a	Trap Drive	50.6
Accumulation Time	58189 $\mu$ s	Averages	5 Spectra	Auto MS/MS	off

