

Display Report

Analysis Info

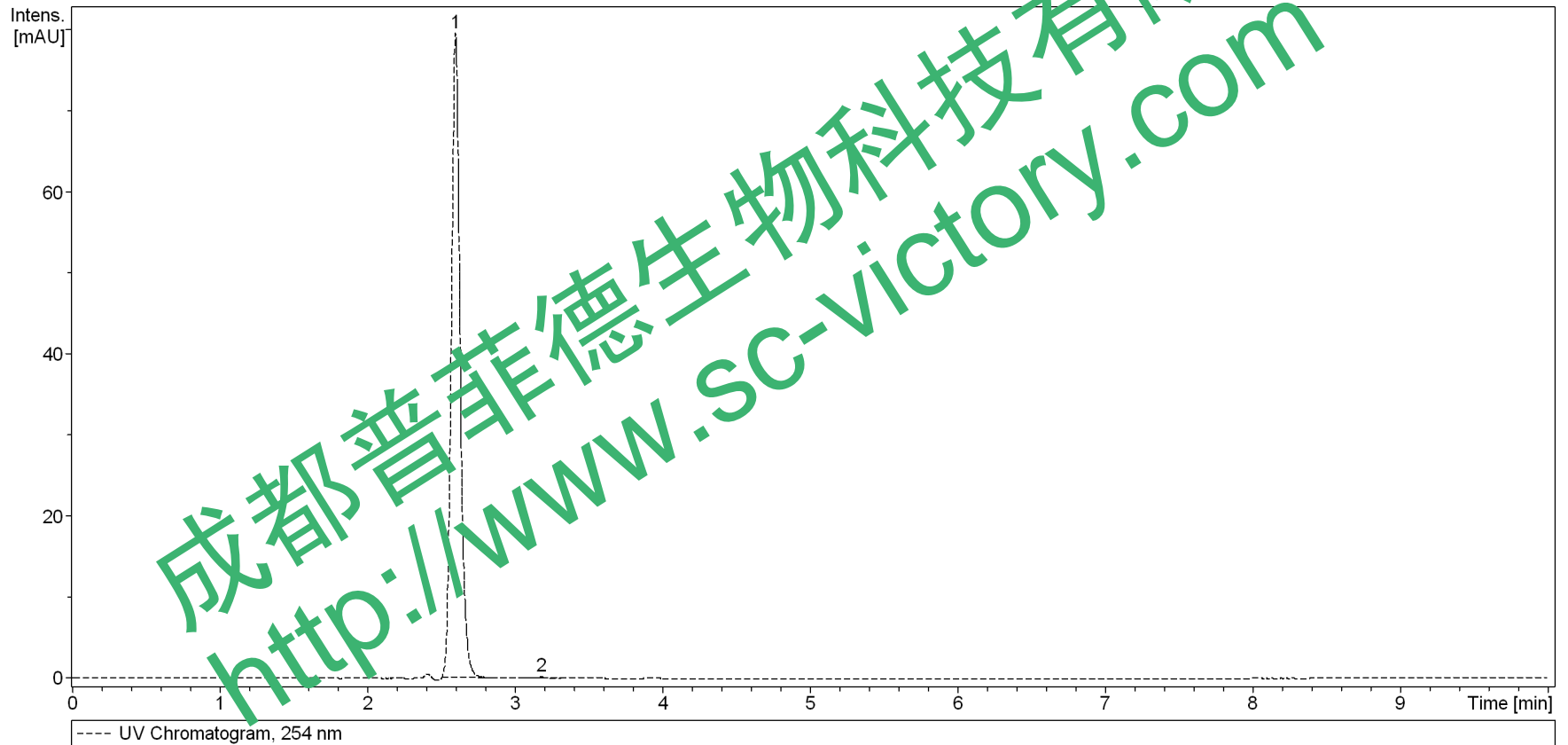
Analysis Name D:\Data\test\0422\lingzhisuan-B_3_01_1078.d
Method 1078.m
Sample Name lingzhisuan-B
Comment

Acquisition Date 4/22/2014 4:36:29 PM

Operator bruker
Instrument amaZon SL

Acquisition Parameter

Ion Source Type	ESI	Ion Polarity	Positive	Alternating Ion Polarity	on
Mass Range Mode	UltraScan	Scan Begin	70 m/z	Scan End	1000 m/z
Capillary Exit	140.0 V	n/a	n/a	Trap Drive	50.6
Accumulation Time	994 μ s	Averages	5 Spectra	Auto MS/MS	off



Display Report

#	RT [min]	Area	Area Frac. %
1	2.6	331.2288	99.6
2	3.2	1.2467	0.4

Display Report

Analysis Info

Analysis Name D:\Data\test\0422\lingzhisuan-B_3_01_1078.d
Method 1078.m
Sample Name lingzhisuan-B
Comment

Acquisition Date 4/22/2014 4:36:29 PM

Operator bruker
Instrument amaZon SL

Acquisition Parameter

Ion Source Type	ESI	Ion Polarity	Positive	Alternating Ion Polarity	on
Mass Range Mode	UltraScan	Scan Begin	70 m/z	Scan End	1000 m/z
Capillary Exit	140.0 V	n/a	n/a	Trap Drive	50.6
Accumulation Time	994 μ s	Averages	5 Spectra	Auto MS/MS	off

