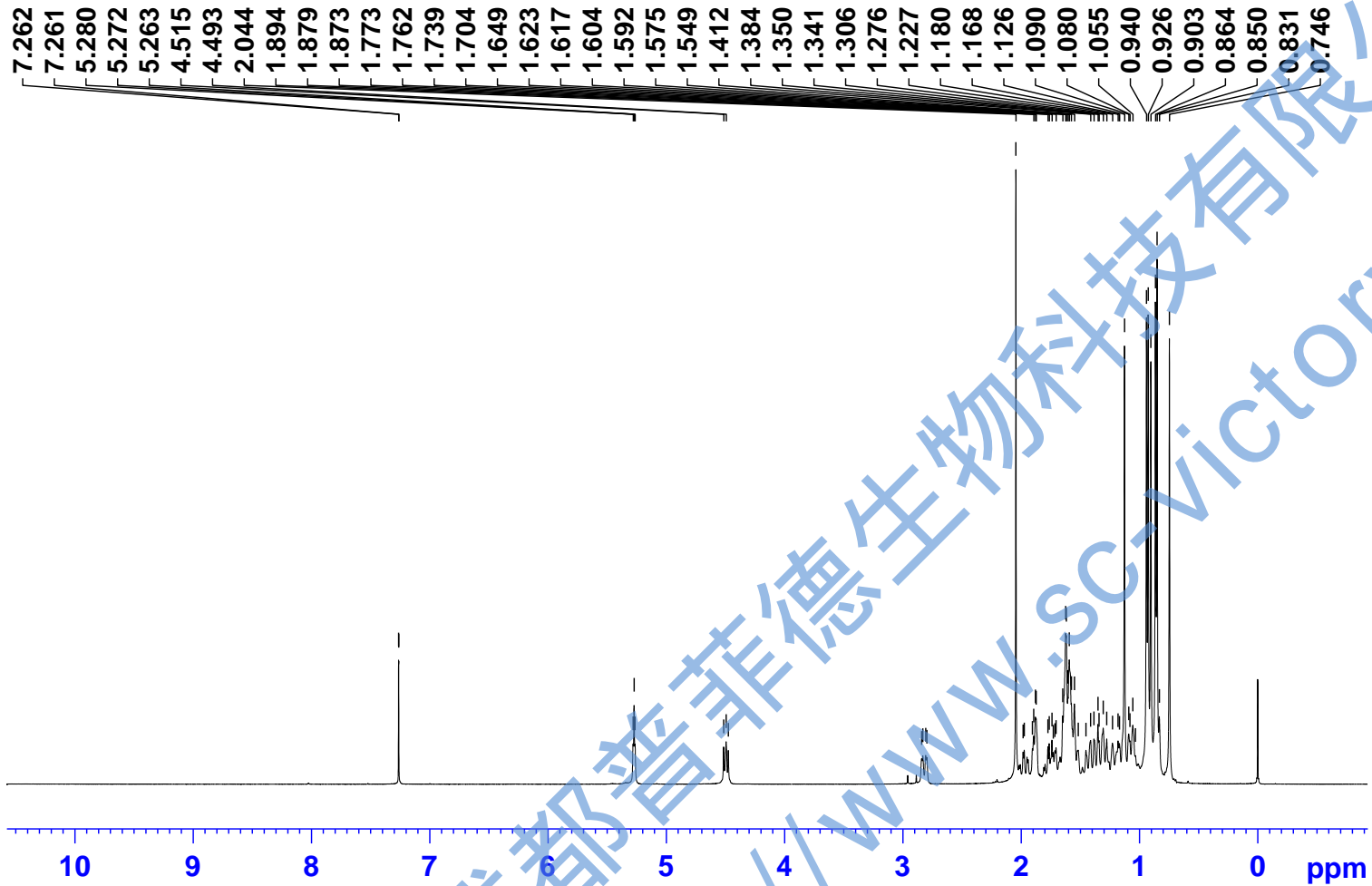


GLP34



Current Data Parameters
NAME GLP34
EXPNO 10
PROCNO 1

F2 - Acquisition Parameters
Date_ 20200926
Time_ 12.19 h
INSTRUM spect
PROBHD z116098_0564 (
PULPROG zg30
TD 65536
SOLVENT CDCl3
NS 16
DS 2
SWH 8012.820 Hz
FIDRES 0.244532 Hz
AQ 4.0894465 sec
RG 70.67
DW 62.400 usec
DE 6.50 usec
TE 300.0 K
D1 1.00000000 sec
TD0 1
SFO1 400.1324708 MHz
NUC1 1H
P1 9.84 usec
PLW1 14.56099987 W

F2 - Processing parameters
SI 65536
SF 400.1300089 MHz
WDW EM
SSB 0
LB 0.30 Hz
GB 0
PC 1.00

成都普菲德生物科技有限公司
http://www.sc-victory.com

GLP34

— 183.96

— 171.04

— 143.61

— 122.56

80.93
77.33
77.02
76.70
55.30
47.56
46.55
45.84
41.55
40.92
39.28
38.07
37.70
36.99
33.79
33.06
32.53
32.44
30.67
28.04
27.67
25.90
23.58
23.53
23.39

BRUKER

Current Data Parameters

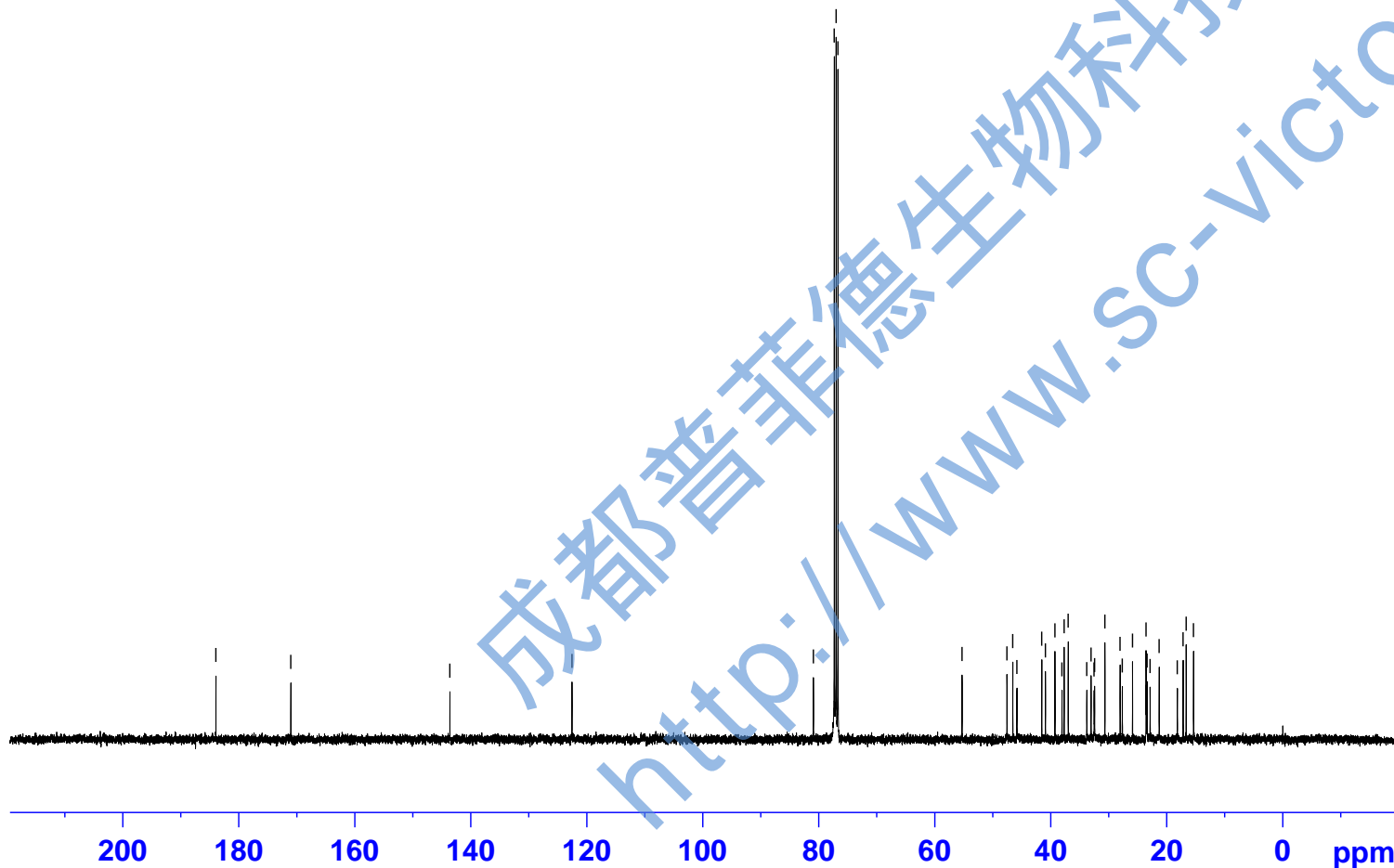
NAME GLP34
EXPNO 11
PROCNO 1

F2 - Acquisition Parameters

Date_ 20200926
Time 12.48 h
INSTRUM spect
PROBHD Z116098_0564 (
PULPROG zgpg30
TD 65536
SOLVENT CDC13
NS 500
DS 4
SWH 24038.461 Hz
FIDRES 0.733596 Hz
AQ 1.3631488 sec
RG 198.68
DW 20.800 usec
DE 6.50 usec
TE 300.0 K
D1 2.00000000 sec
D11 0.03000000 sec
TD0 1
SFO1 100.6228298 MHz
NUC1 13C
P1 10.53 usec
PLW1 69.16899872 W
SFO2 400.1316005 MHz
NUC2 1H
CPDPRG[2] waltz16
PCPD2 90.00 usec
PLW2 14.56099987 W
PLW12 0.17406000 W
PLW13 0.08755000 W

F2 - Processing parameters

SI 32768
SF 100.6127685 MHz
WDW EM
SSB 0
LB 1.00 Hz
GB 0
PC 1.40



成都普菲德生物科技有限公司
http://www.sc-victor.com