

4.843  
4.837  
4.834  
4.829  
4.824  
4.821  
4.820  
4.814  
4.809  
4.568  
4.565  
4.559  
4.526  
4.506  
3.894  
3.889  
3.864  
3.858  
3.710  
3.695  
3.679  
3.664  
3.483  
3.461  
3.453  
3.447  
3.438  
3.433  
3.428  
3.423  
3.414  
3.409  
3.381  
3.358  
3.334  
3.317  
3.259  
3.240  
3.236  
3.216  
3.001  
2.985  
2.955  
2.939  
2.714  
2.711  
2.668  
2.665

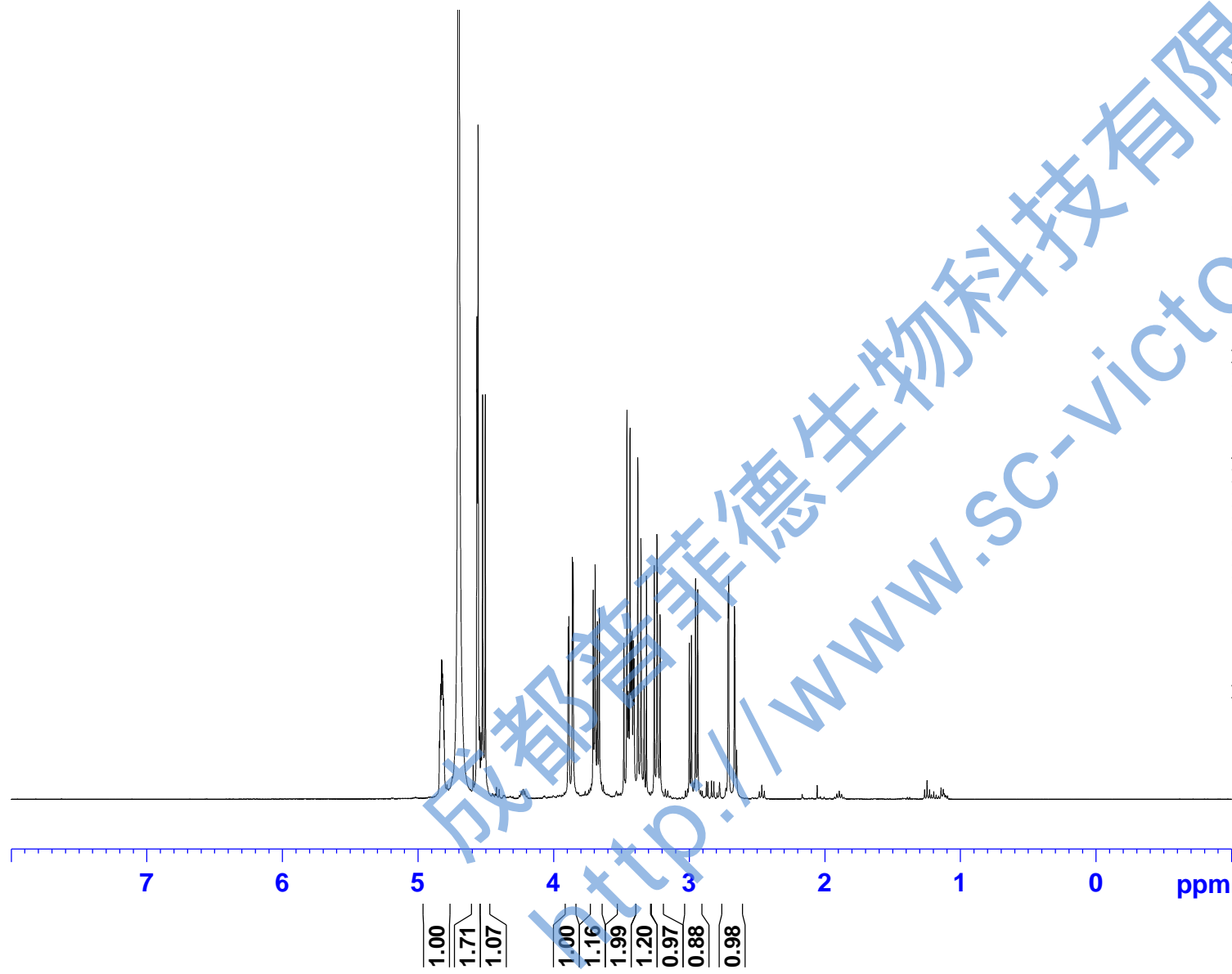


Current Data Parameters  
 NAME JXLG-1H NMR D2O  
 EXPNO 1  
 PROCNO 1

F2 - Acquisition Parameters  
 Date\_ 20161019  
 Time 10.11  
 INSTRUM spect  
 PROBHD 5 mm PABBO BB/  
 PULPROG zg30  
 TD 65536  
 SOLVENT D2O  
 NS 32  
 DS 2  
 SWH 8012.820 Hz  
 FIDRES 0.122266 Hz  
 AQ 4.0894465 sec  
 RG 57.2  
 DW 62.400 usec  
 DE 6.50 usec  
 TE 301.1 K  
 D1 2.00000000 sec  
 TD0 1

==== CHANNEL f1 =====  
 SFO1 400.1324710 MHz  
 NUC1 1H  
 P1 14.79 usec  
 PLW1 11.50800037 W

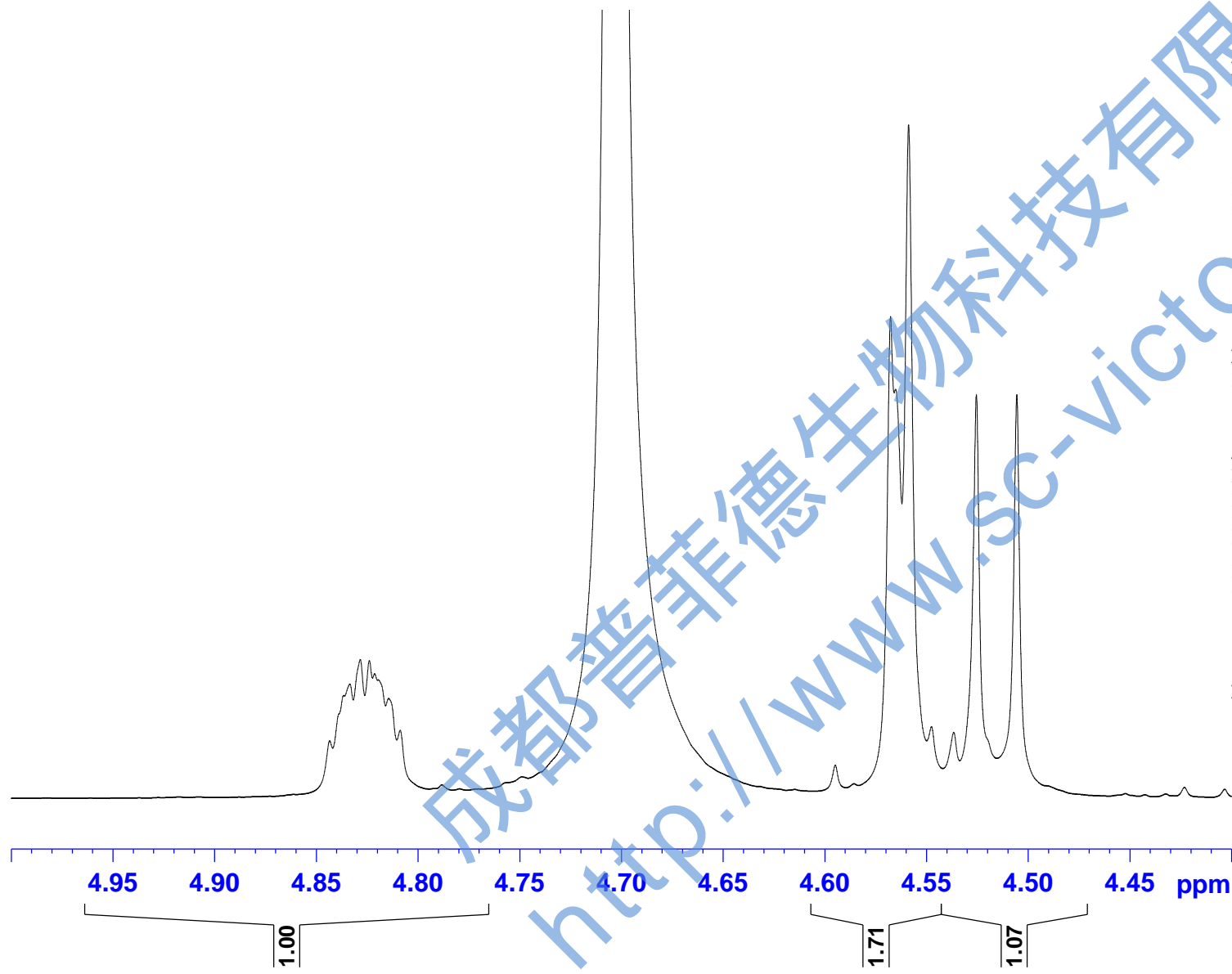
F2 - Processing parameters  
 SI 262144  
 SF 400.1300000 MHz  
 WDW EM  
 SSB 0  
 LB 0.30 Hz  
 GB 0  
 PC 1.00  
 SR 0 Hz



成都普菲德生物科技有限公司  
 www.sc-victor.com

4.843  
4.837  
4.834  
4.829  
4.824  
4.821  
4.820  
4.814  
4.809

4.568  
4.565  
4.559  
4.526  
4.506



Current Data Parameters  
 NAME JXLG-1H NMR D2O  
 EXPNO 1  
 PROCNO 1

F2 - Acquisition Parameters  
 Date\_ 20161019  
 Time 10.11  
 INSTRUM spect  
 PROBHD 5 mm PABBO BB/  
 PULPROG zg30  
 TD 65536  
 SOLVENT D2O  
 NS 32  
 DS 2  
 SWH 8012.820 Hz  
 FIDRES 0.122266 Hz  
 AQ 4.0894465 sec  
 RG 57.2  
 DW 62.400 usec  
 DE 6.50 usec  
 TE 301.1 K  
 D1 2.00000000 sec  
 TD0 1

==== CHANNEL f1 =====  
 SFO1 400.1324710 MHz  
 NUC1 1H  
 P1 14.79 usec  
 PLW1 11.50800037 W

F2 - Processing parameters  
 SI 262144  
 SF 400.1300000 MHz  
 WDW EM  
 SSB 0  
 LB 0.30 Hz  
 GB 0  
 PC 1.00  
 SR 0 Hz

3.894  
3.889

3.864  
3.858

3.710

3.695

3.679

3.664

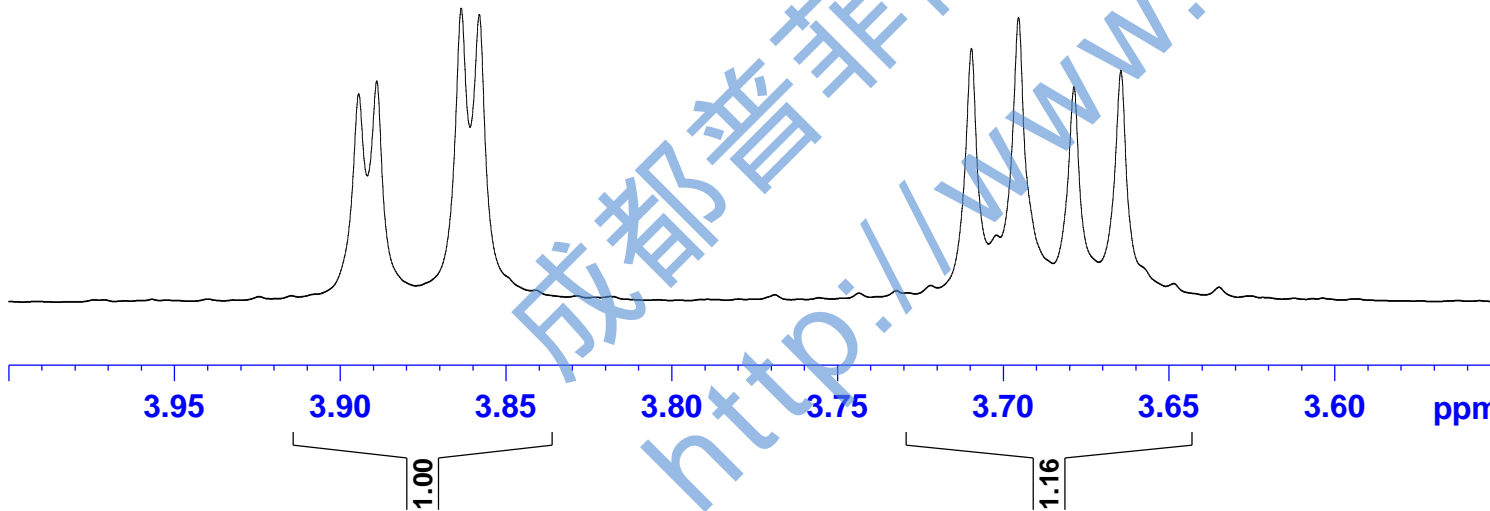


Current Data Parameters  
NAME JXLG-1H NMR D2O  
EXPNO 1  
PROCNO 1

F2 - Acquisition Parameters  
Date\_ 20161019  
Time 10.11  
INSTRUM spect  
PROBHD 5 mm PABBO BB/  
PULPROG zg30  
TD 65536  
SOLVENT D2O  
NS 32  
DS 2  
SWH 8012.820 Hz  
FIDRES 0.122266 Hz  
AQ 4.0894465 sec  
RG 57.2  
DW 62.400 usec  
DE 6.50 usec  
TE 301.1 K  
D1 2.00000000 sec  
TD0 1

==== CHANNEL f1 =====  
SFO1 400.1324710 MHz  
NUC1 1H  
P1 14.79 usec  
PLW1 11.50800037 W

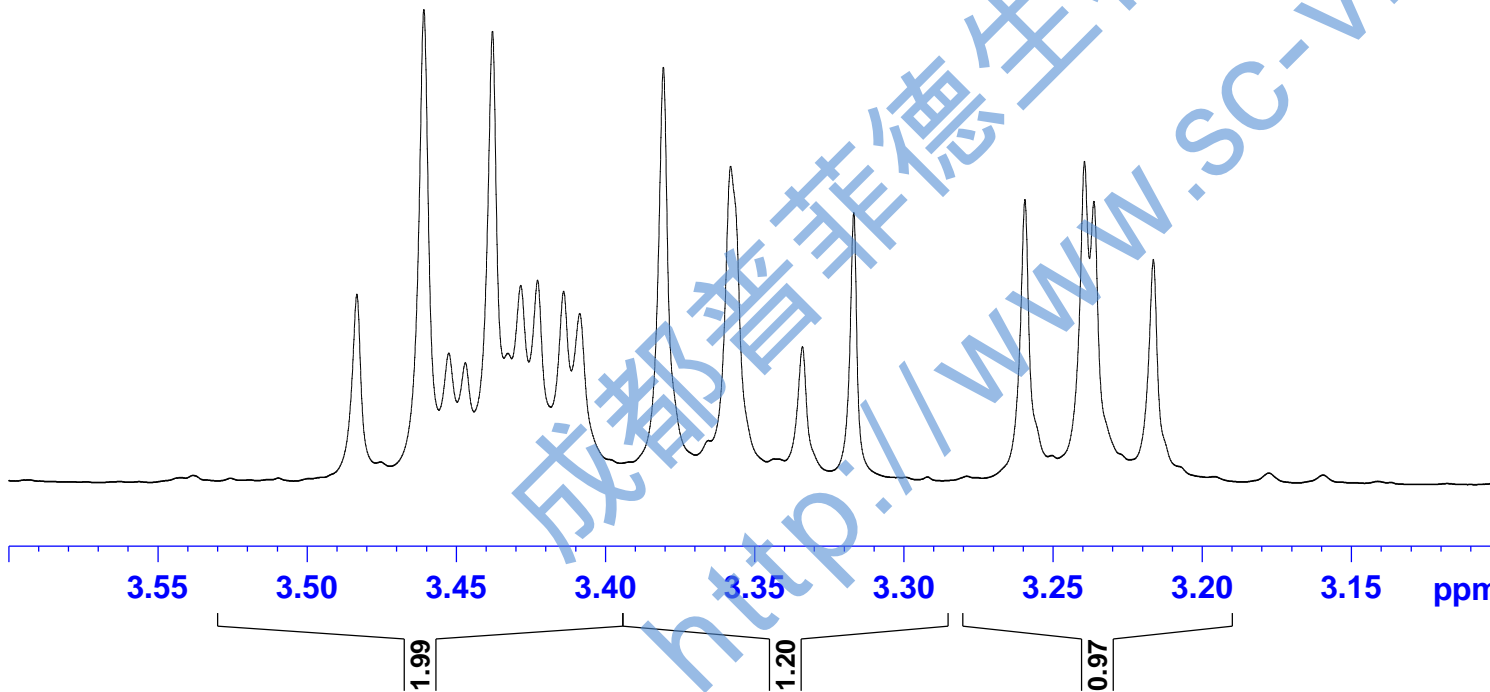
F2 - Processing parameters  
SI 262144  
SF 400.1300000 MHz  
WDW EM  
SSB 0  
LB 0.30 Hz  
GB 0  
PC 1.00  
SR 0 Hz



成都普菲德生物科技有限公司  
http://www.sc-victor.com



— 3.483  
— 3.461  
— 3.453  
— 3.447  
— 3.438  
— 3.433  
— 3.428  
— 3.423  
— 3.414  
— 3.409  
— 3.381  
— 3.358  
— 3.334  
— 3.317  
  
— 3.259  
— 3.240  
— 3.236  
— 3.216



Current Data Parameters  
NAME JXLG-1H NMR D2O  
EXPNO 1  
PROCNO 1

F2 - Acquisition Parameters  
Date\_ 20161019  
Time 10.11  
INSTRUM spect  
PROBHD 5 mm PABBO BB/  
PULPROG zg30  
TD 65536  
SOLVENT D2O  
NS 32  
DS 2  
SWH 8012.820 Hz  
FIDRES 0.122266 Hz  
AQ 4.0894465 sec  
RG 57.2  
DW 62.400 usec  
DE 6.50 usec  
TE 301.1 K  
D1 2.00000000 sec  
TD0 1

==== CHANNEL f1 =====  
SFO1 400.1324710 MHz  
NUC1 1H  
P1 14.79 usec  
PLW1 11.50800037 W

F2 - Processing parameters  
SI 262144  
SF 400.1300000 MHz  
WDW EM  
SSB 0  
LB 0.30 Hz  
GB 0  
PC 1.00  
SR 0 Hz

— 3.001  
— 2.985  
— 2.955  
— 2.939

— 2.714  
— 2.711  
— 2.668  
— 2.665

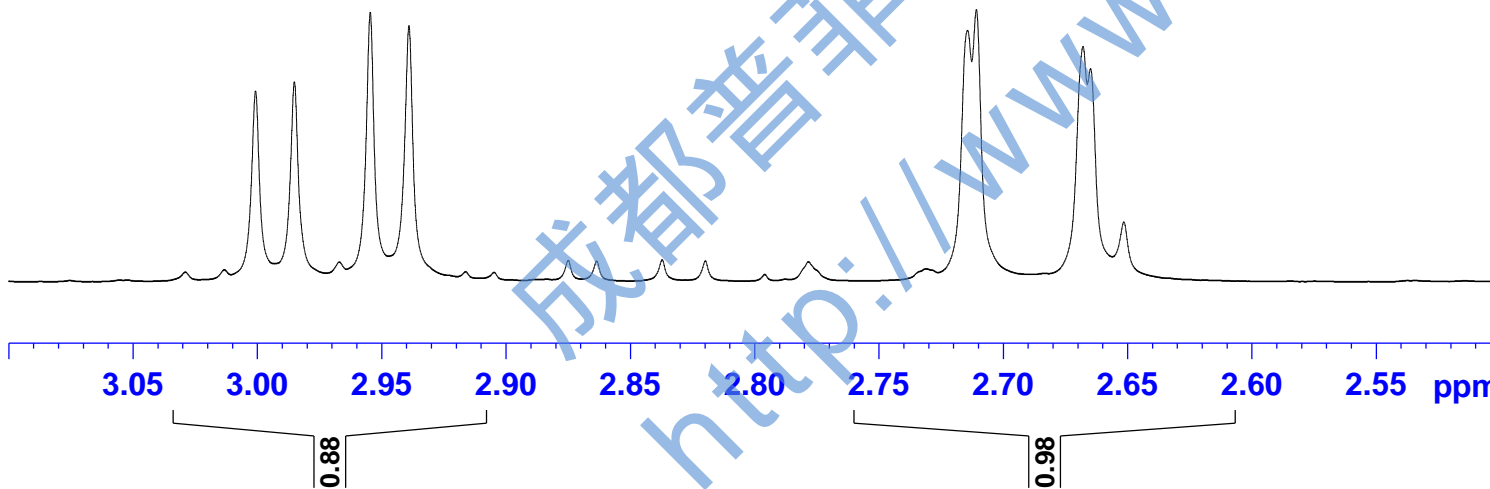


Current Data Parameters  
NAME JXLG-1H NMR D2O  
EXPNO 1  
PROCNO 1

F2 - Acquisition Parameters  
Date\_ 20161019  
Time 10.11  
INSTRUM spect  
PROBHD 5 mm PABBO BB/  
PULPROG zg30  
TD 65536  
SOLVENT D2O  
NS 32  
DS 2  
SWH 8012.820 Hz  
FIDRES 0.122266 Hz  
AQ 4.0894465 sec  
RG 57.2  
DW 62.400 usec  
DE 6.50 usec  
TE 301.1 K  
D1 2.00000000 sec  
TD0 1

==== CHANNEL f1 =====  
SFO1 400.1324710 MHz  
NUC1 1H  
P1 14.79 usec  
PLW1 11.50800037 W

F2 - Processing parameters  
SI 262144  
SF 400.1300000 MHz  
WDW EM  
SSB 0  
LB 0.30 Hz  
GB 0  
PC 1.00  
SR 0 Hz



— 179.69

— 101.36

76.06  
75.59  
75.34  
75.33  
72.91  
69.54  
60.67

— 35.30



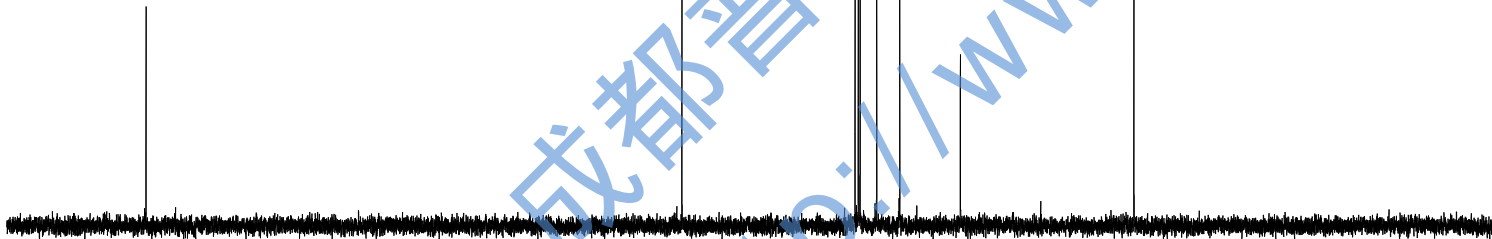
Current Data Parameters  
NAME JXLG-13C NMR D2O  
EXPNO 1  
PROCNO 1

F2 - Acquisition Parameters  
Date\_ 20161019  
Time 10.16  
INSTRUM spect  
PROBHD 5 mm PABBO BB/  
PULPROG zgig30  
TD 65536  
SOLVENT D2O  
NS 366  
DS 4  
SWH 24038.461 Hz  
FIDRES 0.366798 Hz  
AQ 1.3631488 sec  
RG 202.5  
DW 20.800 usec  
DE 6.50 usec  
TE 301.2 K  
D1 2.0000000 sec  
D11 0.0300000 sec  
TD0 1

==== CHANNEL f1 =====  
SFO1 100.6228298 MHz  
NUC1 13C  
P1 10.13 usec  
PLW1 51.0000000 W

==== CHANNEL f2 =====  
SFO2 400.1316005 MHz  
NUC2 1H  
CPDPRG[2] waltz16  
PCPD2 90.00 usec  
PLW2 11.50800037 W  
PLW12 0.31077999 W

F2 - Processing parameters  
SI 262144  
SF 100.6127690 MHz  
WDW EM  
SSB 0  
LB 1.00 Hz  
GB 0  
PC 1.40  
SR 0 Hz



180 160 140 120 100 80 60 40 20 0 ppm

成都普菲德生物科技有限公司  
http://www.sc-victor.com

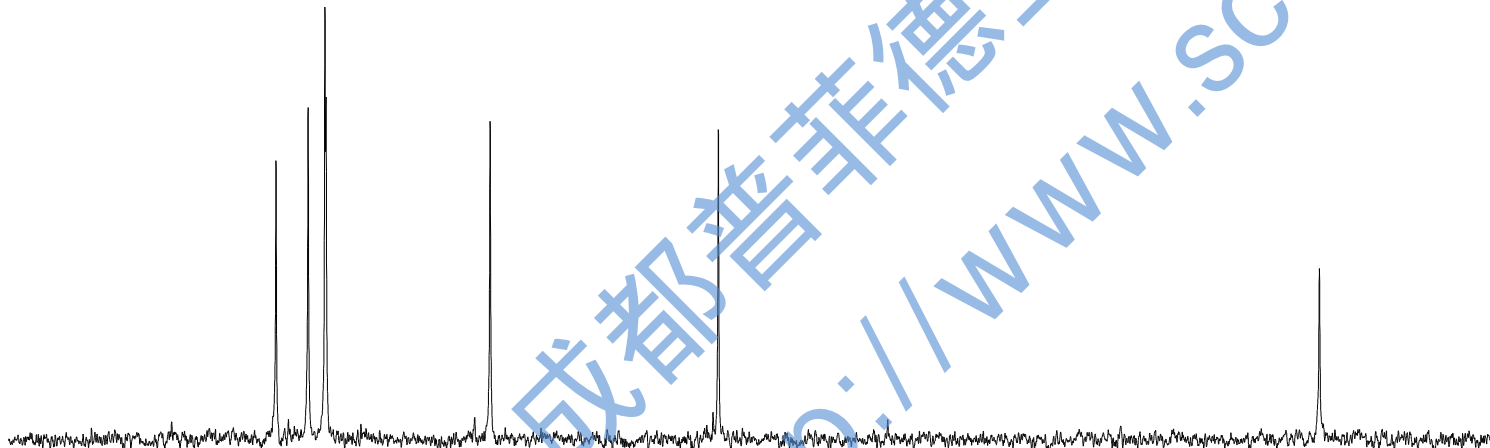


76.06  
75.59  
75.34  
75.33

72.91

69.54

60.67



Current Data Parameters  
NAME JXLG-13C NMR D2O  
EXPNO 1  
PROCNO 1

F2 - Acquisition Parameters  
Date\_ 20161019  
Time 10.16  
INSTRUM spect  
PROBHD 5 mm PABBO BB/  
PULPROG zgig30  
TD 65536  
SOLVENT D2O  
NS 366  
DS 4  
SWH 24038.461 Hz  
FIDRES 0.366798 Hz  
AQ 1.3631488 sec  
RG 202.5  
DW 20.800 usec  
DE 6.50 usec  
TE 301.2 K  
D1 2.0000000 sec  
D11 0.0300000 sec  
TD0 1

==== CHANNEL f1 =====  
SFO1 100.6228298 MHz  
NUC1 13C  
P1 10.13 usec  
PLW1 51.0000000 W

==== CHANNEL f2 =====  
SFO2 400.1316005 MHz  
NUC2 1H  
CPDPRG[2] waltz16  
PCPD2 90.00 usec  
PLW2 11.50800037 W  
PLW12 0.31077999 W

F2 - Processing parameters  
SI 262144  
SF 100.6127690 MHz  
WDW EM  
SSB 0  
LB 1.00 Hz  
GB 0  
PC 1.40  
SR 0 Hz

79 78 77 76 75 74 73 72 71 70 69 68 67 66 65 64 63 62 61 60 ppm