

Current Data Parameters
 NAME LuoBoLiuGan-1H NMR CD3OD
 EXPNO 3
 PROCNO 1

F2 - Acquisition Parameters
 Date_ 20180322
 Time 1.23
 INSTRUM spect
 PROBHD 5 mm PABBO BB/
 PULPROG zg30
 TD 65536
 SOLVENT MeOD
 NS 16
 DS 2
 SWH 8012.820 Hz
 FIDRES 0.122266 Hz
 AQ 4.0894465 sec
 RG 92
 DW 62.400 usec
 DE 6.50 usec
 TE 301.2 K
 D1 1.00000000 sec
 TD0 1

==== CHANNEL f1 =====
 SFO1 400.1324710 MHz
 NUC1 1H
 P1 14.79 usec
 PLW1 11.50800037 W

F2 - Processing parameters
 SI 65536
 SF 400.1300085 MHz
 WDW EM
 SSB 0
 LB 0.30 Hz
 GB 0
 PC 1.00
 SR 8.52 Hz

— 161.36

83.65
82.38
79.60
74.30
71.37
62.86
57.19
54.86
54.83
54.79
54.33
53.81
38.10
33.06
26.98
22.92



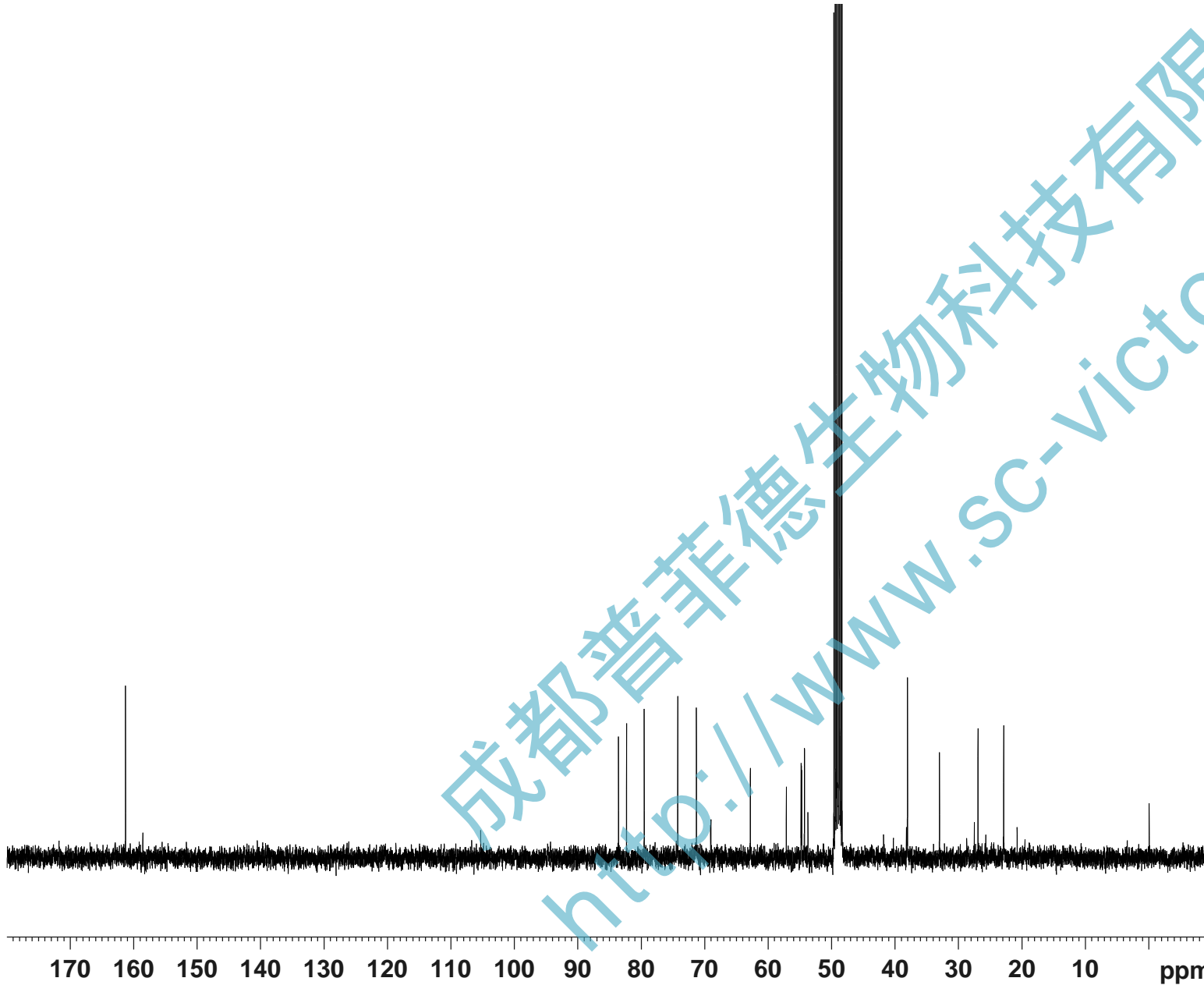
Current Data Parameters
 NAME LuoBoLiuGan-13C NMR CD3OD
 EXPNO 4
 PROCNO 1

F2 - Acquisition Parameters
 Date_ 20180321
 Time 23.27
 INSTRUM spect
 PROBHD 5 mm PABBO BB/
 PULPROG zgig30
 TD 65536
 SOLVENT MeOD
 NS 2048
 DS 4
 SWH 24038.461 Hz
 FIDRES 0.366798 Hz
 AQ 1.3631488 sec
 RG 202.5
 DW 20.800 usec
 DE 6.50 usec
 TE 301.1 K
 D1 2.0000000 sec
 D11 0.0300000 sec
 TD0 1

==== CHANNEL f1 =====
 SFO1 100.6228298 MHz
 NUC1 13C
 P1 10.13 usec
 PLW1 51.0000000 W

==== CHANNEL f2 =====
 SFO2 400.1316005 MHz
 NUC2 1H
 CPDPRG[2] waltz16
 PCPD2 90.00 usec
 PLW2 11.50800037 W
 PLW12 0.31077999 W

F2 - Processing parameters
 SI 262144
 SF 100.6126236 MHz
 WDW EM
 SSB 0
 LB 1.00 Hz
 GB 0
 PC 1.40
 SR -145.35 Hz



成都普菲德生物科技有限公司
<http://www.sc-victor.com>